

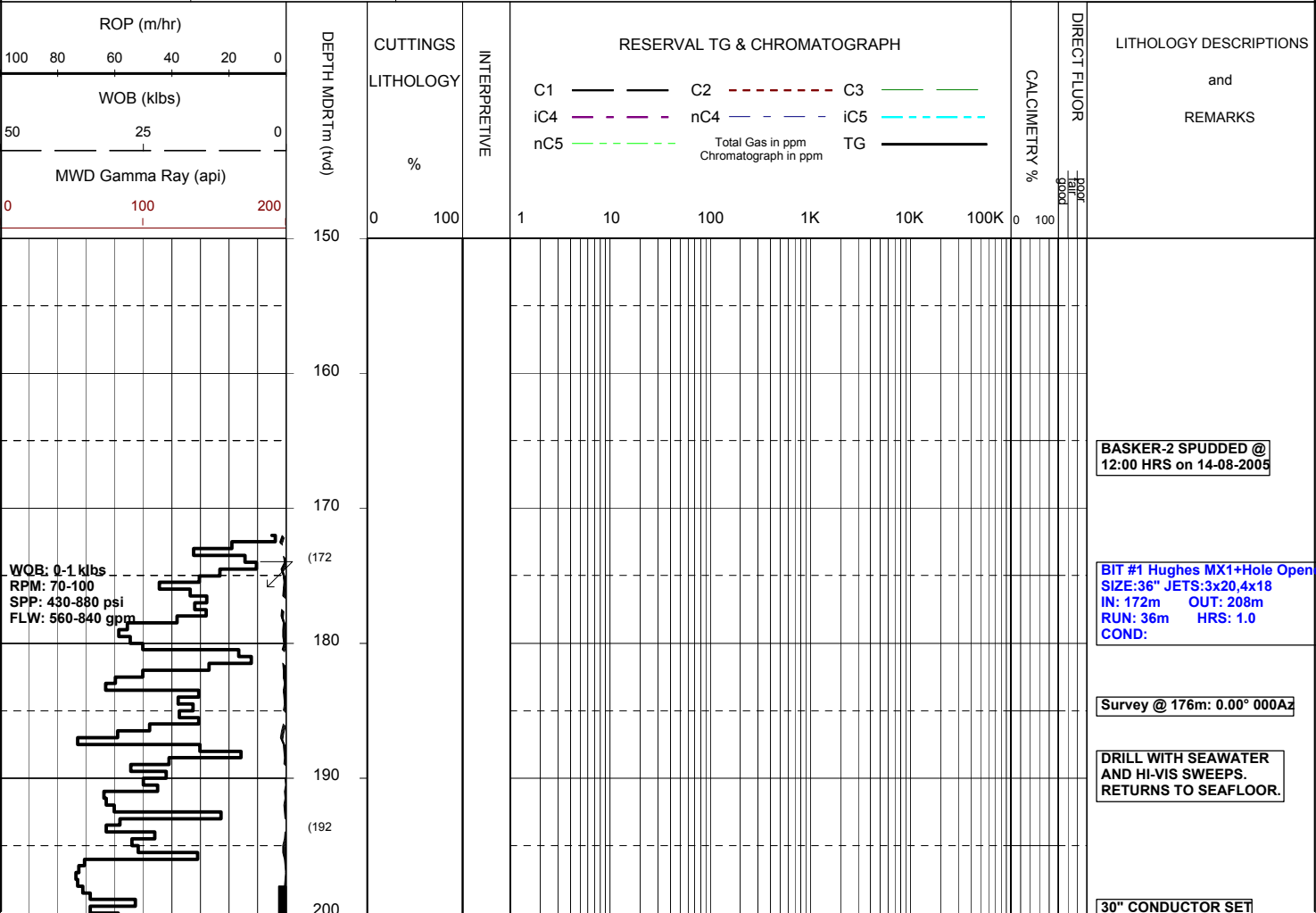


MASTERLOG BASKER 2



GENERAL	POSITION	HOLE / CASING INFO	DATE / DEPTH	ENGINEERS
Country : AUSTRALIA	Latitude : 38°17'58.51"S	17 1/2" Hole to (mMDRT): 1006	Spud Date : 14-08-2005	D. ADDERLEY
Permit : VIC RL6	Longitude : 148°42'24.72"E	12 1/4" Hole to (mMDRT) :	Total Depth Date :	A. DUNN
Field : BASKER	UTM Co-ord X (m E): 649251.9	8 1/2" Hole to (mMDRT) :	Total Depth (mMDRT):	S. RAJA
Basin : GIPPSLAND	UTM Co-ord Y (m N): 5759566	30" Conductor @ (mMDRT) : 208	True Vertical Depth (mTVDSS):	P. RADY
Well Type : APPRAISAL	RT to MSL (m): 21.5	13 3/8" Shoe @ (mMDRT) : 1000	Log Scale : 1/ 500	
Rig Name : Ocean Patriot	RT to Sea Bed (m): 174	9 5/8" Shoe @ (mMDRT) :	Final Status :	

ABBREVIATIONS		LITHOLOGY LEGEND				ENGINEERING LEGEND	
MW Mud Weight	WOB Weight on Bit (klbs)	Marl	Quartzite	Siltstone	Rudists	Essai non concl	Mud loss
FV Funnel Viscosity	RPM Rotations Per Min	Clay, Sand Lime	ar. Sandstone	f to vf Sand f	Sponges	Aucun fluide re	
PV Plastic Viscosity	FLW Flow Rate (gpm)	do. Shale	bitum. Shale (b)	Fossils	Sporomorphs	TEST Test	← RFT
YP Yield Point	SPP Pump Pressure (psi)	ca. Shale	Claystone	Algae	Tigillites	Filtrat	← FIT
Gel Gel Strength	RR Re-Run Bit	sandy Shale	Fine SST	Lithic Fragment	Vertebrates	Deviation curve	DST
WL Water Loss	TG Trip Gas	si. Claystone	sa. Shale	Belemnits	Wood silicified	Mud gain	Cement
KCI Potassium Chloride	CG Connection Gas					Boue	
Cl Chlorides	BG Background Gas						
Incl Inclination	DGP Drilled Gas Peak						
Az Azimuth	MM Mud Motor						



@ 208 mMDRT

BIT #1RR Hughes MX-1
SIZE:17.5" JETS:3x20
IN: 208m OUT: 1006m
RUN: 798m HRS: 20.9
COND:

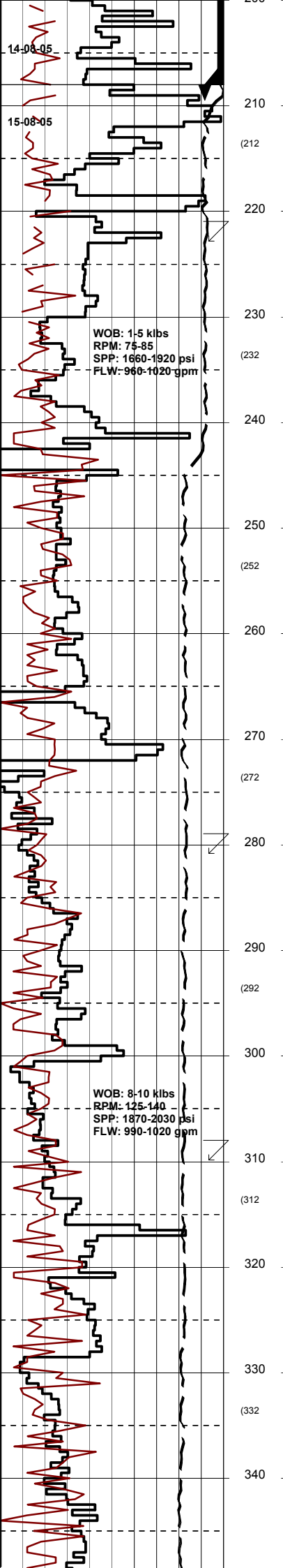
Survey @ 224.6m: 0.19° 161.0A

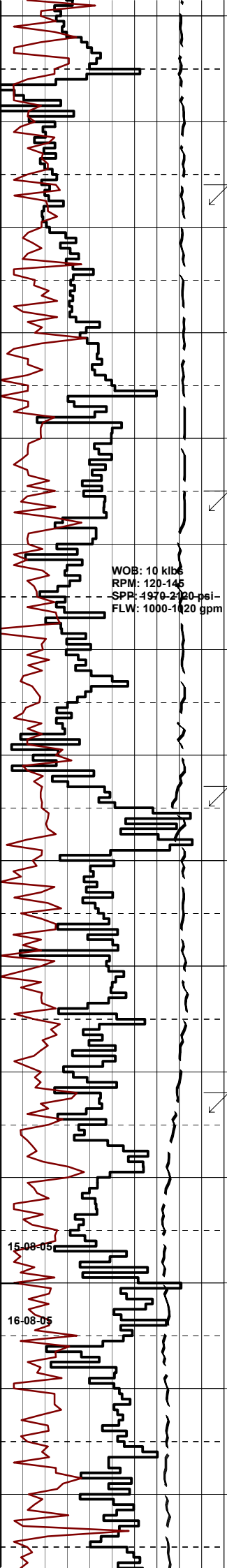
DRILL WITH SEAWATER
AND HI-VIS SWEEPS.
RETURNS TO SEAFLOOR.

Survey @ 282.4m: 0.07° 139.7A

Survey @ 311.3m: 0.09° 116.8A

DRILL WITH SEAWATER
AND HI-VIS SWEEPS.
RETURNS TO SEAFLOOR.





350
(352)
360
370
(372)
380
390
(392)
400
410
(412)
420
430
(432)
440
450
(452)
460
470
(472)
480
490
(492)

WOB: 10 klbs
RPM: 120-145
SPR: 1970-2120 psi
FLW: 1000-1120 gpm

Survey @ 369.0m: 0.06° 117.0A

Survey @ 397.8m: 0.09° 163.1A

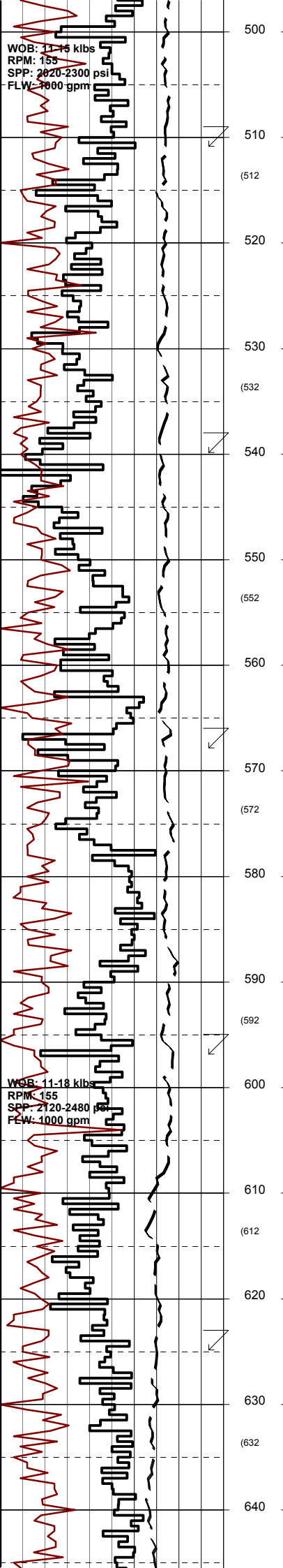
Survey @ 426.6m: 0.04° 150.9A

DRILL WITH SEAWATER
AND HI-VIS SWEEPS.
RETURNS TO SEAFLOOR.

Survey @ 455.2m: 0.09° 138.6A

15-08-05

16-08-05



Survey @ 512.5m: 0.09° 115.6Az

Survey @ 541.0m: 0.09° 127.3Az

DRILL WITH SEAWATER
AND HI-VIS SWEEPS.
RETURNS TO SEAFLOOR.

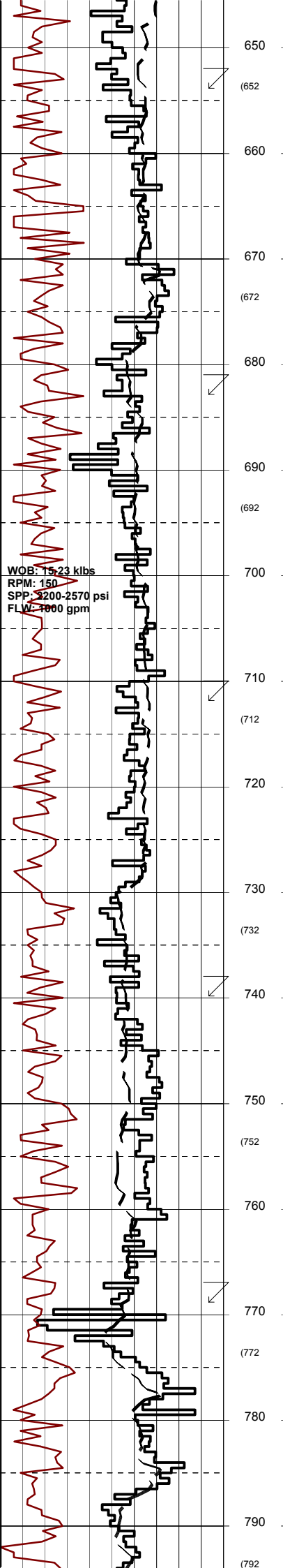
Survey @ 569.5m: 0.09° 149.6Az

Survey @ 598.1m: 0.10° 130.1Az

Survey @ 626.7m: 0.07° 122.8Az

DRILL WITH SEAWATER

DRILL WITH SEAWATER
AND HI-VIS SWEEPS.
RETURNS TO SEAFLOOR.



650
(652)
660
(672)
680
690
(692)
700
710
(712)
720
730
(732)
740
750
(752)
760
770
(772)
780
790
(792)

Survey @ 655.4m: 0.07° 93.5Az

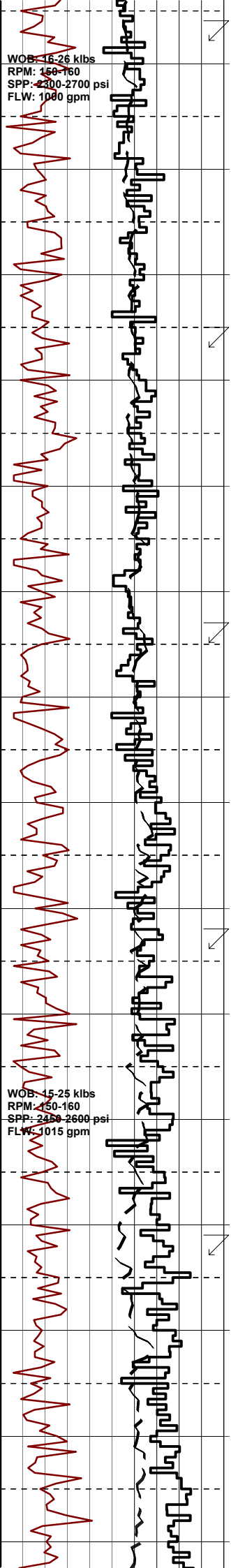
Survey @ 684.1m: 0.09° 75.7Az

Survey @ 713.0m: 0.07° 46.9Az

Survey @ 741.8m: 0.09° 14.6Az

DRILL WITH SEAWATER
AND HI-VIS SWEEPS.
RETURNS TO SEAFLOOR.

Survey @ 770.7m: 0.11° 35.1Az



WOB: 16-26 klbs
RPM: 150-160
SPP: 2300-2700 psi
FLW: 1000 gpm

WOB: 15-25 klbs
RPM: 150-160
SPP: 2400-2600 psi
FLW: 1015 gpm

800
810
(812)
820
830
(832)
840
850
(852)
860
870
(872)
880
890
(892)
900
910
(912)
920
930
(932)
940

Survey @ 799.5m: 0.10° 46.2Az

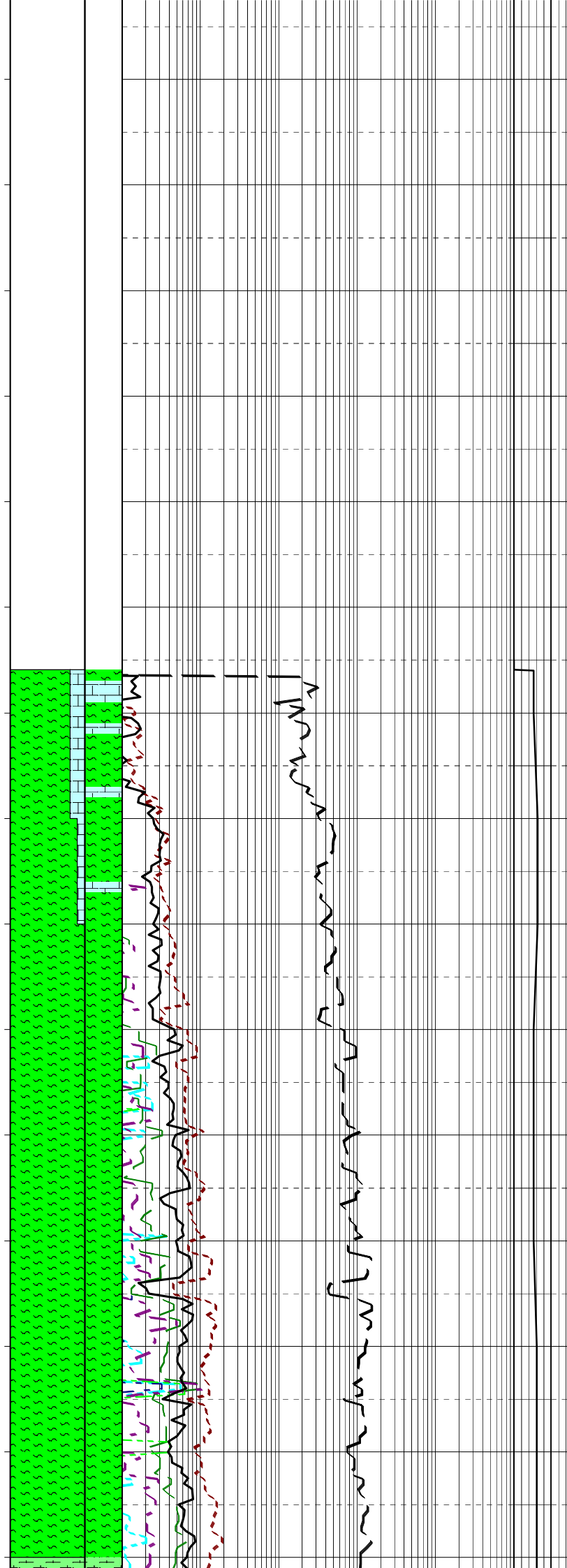
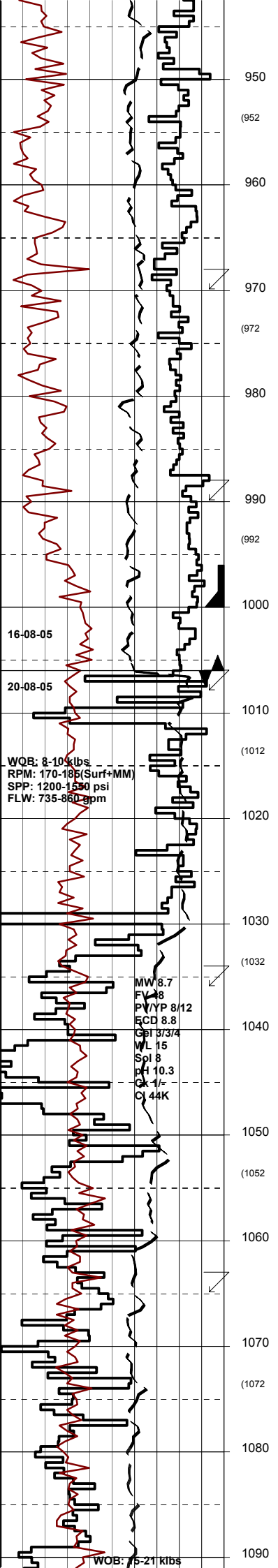
Survey @ 828.2m: 0.07° 89.3Az

DRILL WITH SEAWATER
AND HI-VIS SWEEPS.
RETURNS TO SEAFLOOR.

Survey @ 856.7m: 0.07° 42.4Az

Survey @ 885.2m: 0.00° 253.4Az

Survey @ 913.7m: 0.06° 324.6Az



DRILL WITH SEAWATER AND HI-VIS SWEEPS. RETURNS TO SEAFLOOR.

Survey @ 970.8m: 0.04° 321.6Az

Survey @ 990.3m: 0.10° 275.8Az

13.375" CASING SET @ 1000m

LOT @ 13.375" CSG SHOE EMW=12.5ppg

BIT #3 Security DBS PDC
 SIZE:12.25" JETS:3x18,3x16
 IN: 1006m OUT: 2497m
 RUN: 1491m HRS: 43.2
 COND: 0-0-NO-A-E-I-RR-TD

KCI/PHPA/Glycol Mud System

Survey @ 1007.6m: 0.12° 324.0Az

MARL:yel gry,lt olv gry,v lt gry, aren i/p,arg,mnr carb spks & lams,v sft-sft,blk.

Survey @ 1036.3m: 0.18° 300.5Az

MARL:yel gry,olv gry i/p,lt gry, aren i/p,arg,mnr carb spks & lams,tr LMST frags,v sft-sft, mod hd i/p,blk.

Survey @ 1065.0m: 0.18° 5.0Az

MARL:a/a.

16-08-05

20-08-05

WOB: 8-10 klbs
 RPM: 170-180(Surf+MM)
 SPP: 1200-1500 psi
 FLW: 735-860 gpm

MW 8.7
 FW 8
 PV/YP 8/12
 ECD 8.8
 CBT 3/3/4
 WL 15
 Spl 8
 PH 10.3
 CK 1/-
 CI 44K

WOB: 75-211 klbs

Survey @ 1093.9m: 0.22° 331.1A

ARGILLACEOUS LIMESTONE:
lt gry,lt olv gry,mnr yel gry,com
silty,mnr aren,occ carb spks,rr
glauc spks,v sft-sft,blky-sbbiky.

Survey @ 1122.8m: 0.14° 342.3A

ARGILLACEOUS LIMESTONE:
lt gry,lt olv gry,mnr yel gry,com
silty,mnr aren,occ carb spks,rr
carb lams,v sft-sft,blky-sbbiky.

Survey @ 1151.7m: 0.31° 334.3A

ARGILLACEOUS LIMESTONE:
v lt-lt gry,yel gry,lt olv gry,com
silty,mnr vf aren,mod com carb
spks,rr carb lams,v sft-sft,rr
mod frm,blky-sbbiky.

Survey @ 1180.5m: 0.25° 318.6A

ARGILLACEOUS LIMESTONE:
v lt-lt gry,occ yel gry-lt olv gry,
com silty,mnr vf aren,mod com
carb spks,rr forams,v sft-sft,rr
mod frm,blky-sbbiky.

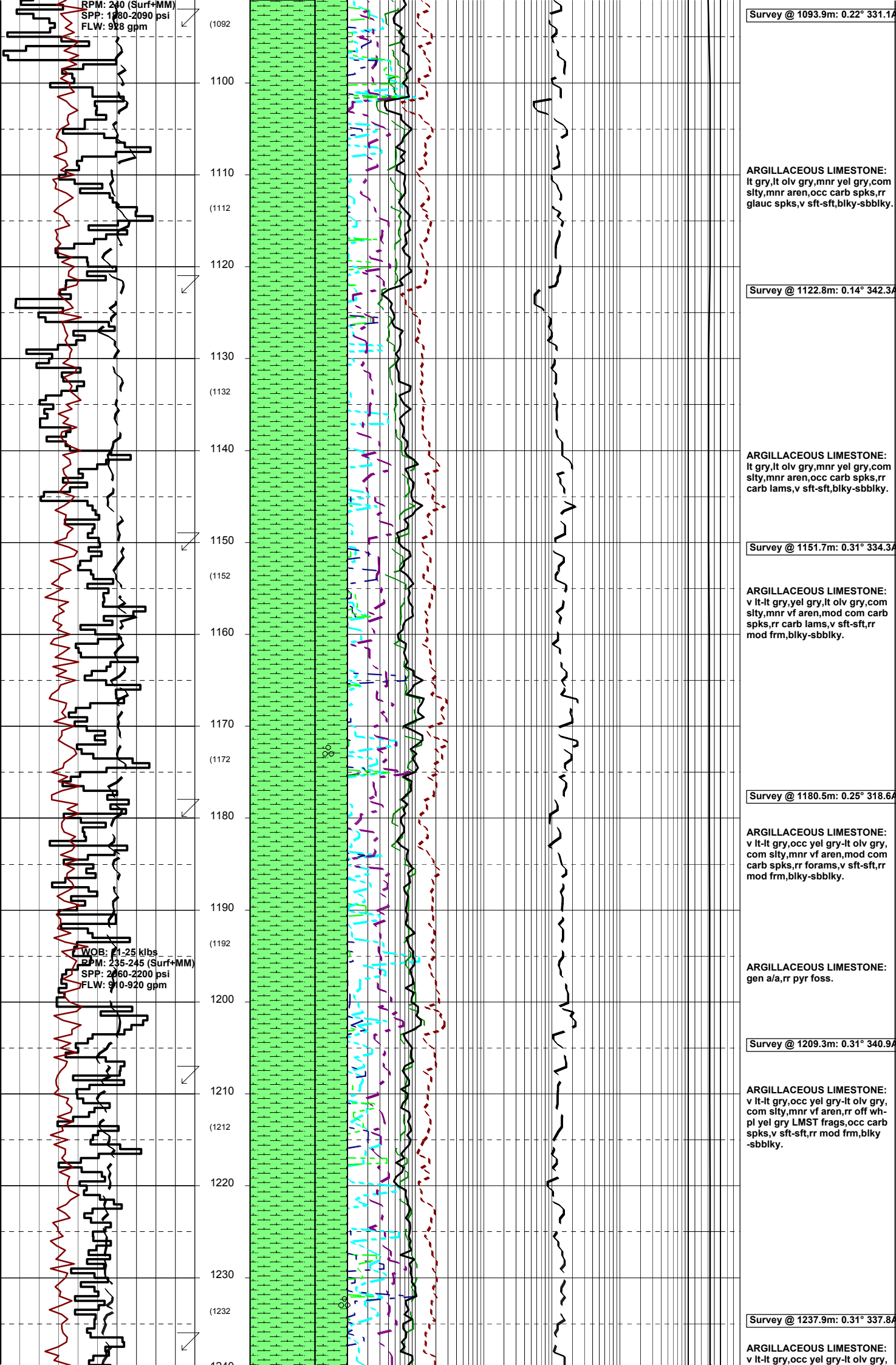
ARGILLACEOUS LIMESTONE:
gen a/a,rr pyr foss.

Survey @ 1209.3m: 0.31° 340.9A

ARGILLACEOUS LIMESTONE:
v lt-lt gry,occ yel gry-lt olv gry,
com silty,mnr vf aren,rr off wh-
pl yel gry LMST frags,occ carb
spks,v sft-sft,rr mod frm,blky
-sbbiky.

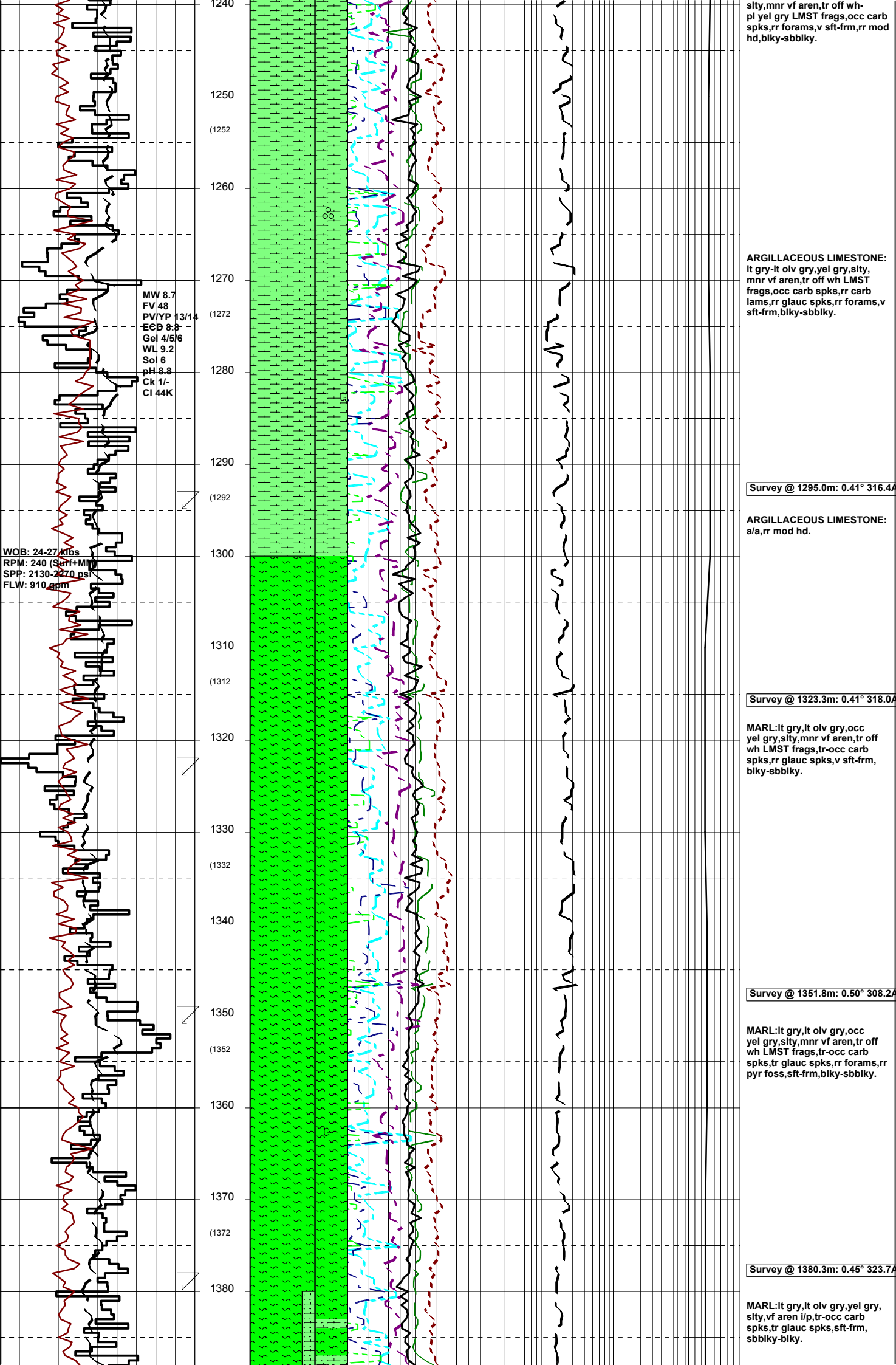
Survey @ 1237.9m: 0.31° 337.8A

ARGILLACEOUS LIMESTONE:
v lt-lt gry,occ yel gry-lt olv gry,



RPM: 240 (Surf+MM)
SPP: 1780-2090 psi
FLW: 928 gpm

WOB: 11-25 klbs
RPM: 235-245 (Surf+MM)
SPP: 2260-2200 psi
FLW: 910-920 gpm



MW 8.7
 FV 48
 PV/YP 13/14
 ECD 8.8
 Gel 4/5/6
 WL 9.2
 Sol 6
 pH 8.8
 Ck 1/-
 CI 44K

WOB: 24-27 Klbs
 RPM: 240 (Surf-Mid)
 SPP: 2130-2270 ps
 FLW: 910 gpm

slty,mnr vf aren,tr off wh-
 pl yel gry LMST frags,occ carb
 spks,rr forams,v sft frm,rr mod
 hd,blky-sbbiky.

ARGILLACEOUS LIMESTONE:
 lt gry-lt olv gry,yel gry,slty,
 mnr vf aren,tr off wh LMST
 frags,occ carb spks,rr carb
 lams,rr glauc spks,rr forams,v
 sft frm,blky-sbbiky.

Survey @ 1295.0m: 0.41° 316.4A

ARGILLACEOUS LIMESTONE:
 a/a,rr mod hd.

Survey @ 1323.3m: 0.41° 318.0A

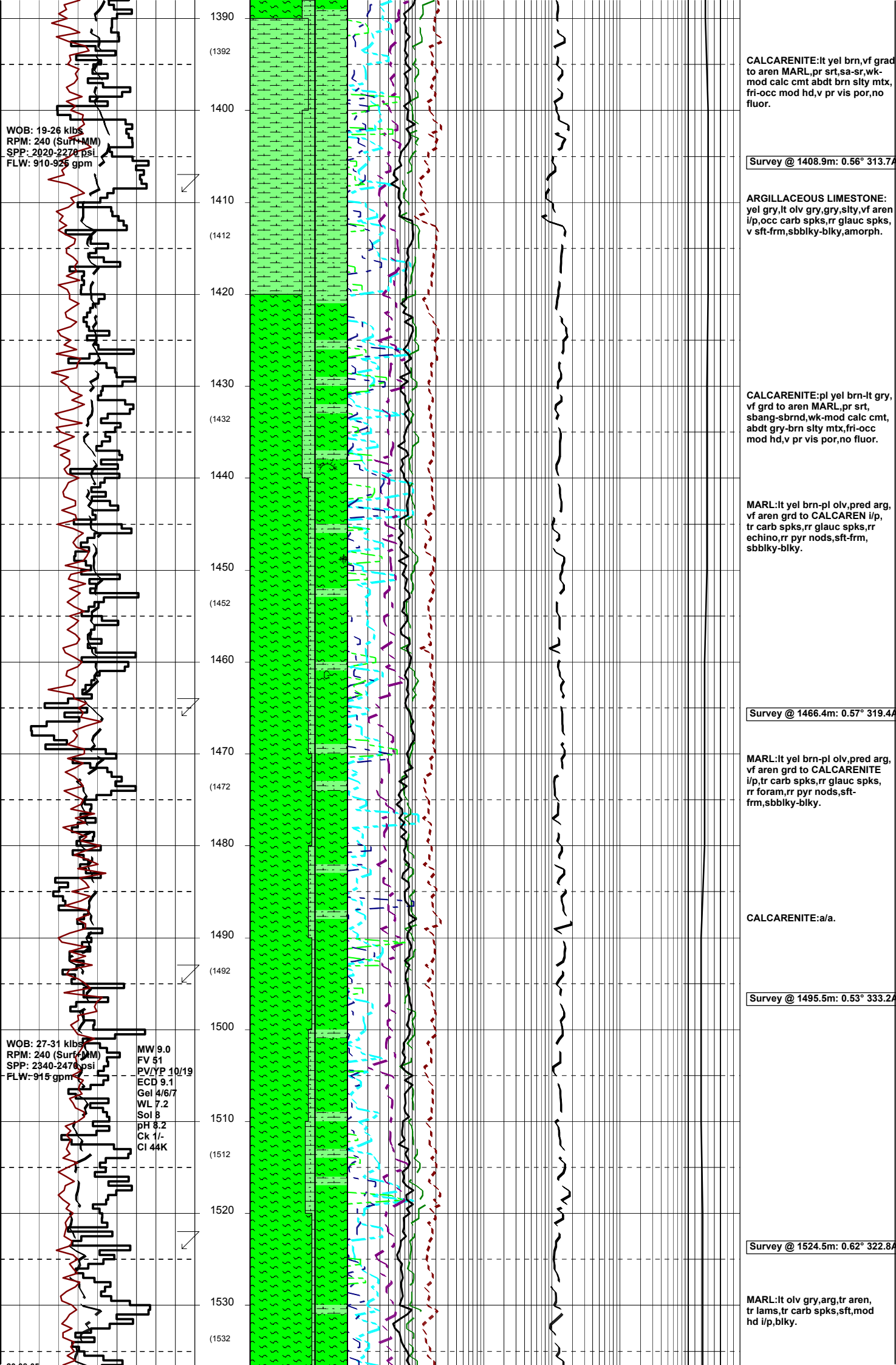
MARL:lt gry,lt olv gry,occ
 yel gry,slty,mnr vf aren,tr off
 wh LMST frags,tr-occ carb
 spks,rr glauc spks,v sft frm,
 blky-sbbiky.

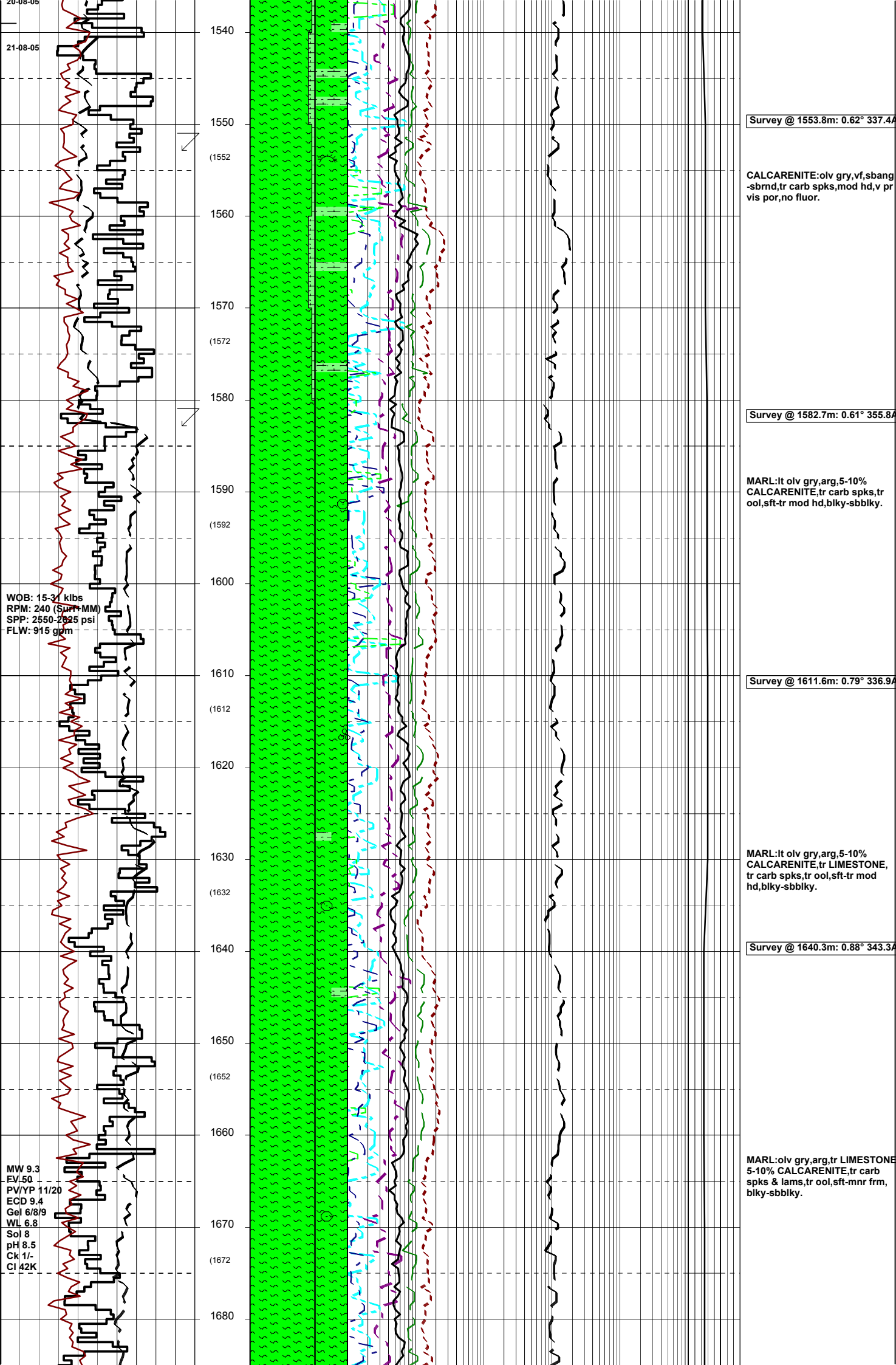
Survey @ 1351.8m: 0.50° 308.2A

MARL:lt gry,lt olv gry,occ
 yel gry,slty,mnr vf aren,tr off
 wh LMST frags,tr-occ carb
 spks,tr glauc spks,rr forams,rr
 pyr foss,sft frm,blky-sbbiky.

Survey @ 1380.3m: 0.45° 323.7A

MARL:lt gry,lt olv gry,yel gry,
 slty,vf aren i/p,tr-occ carb
 spks,tr glauc spks,sft frm,
 sbbiky-blky.





21-08-05

1540
1550
(1552)
1560
1570
(1572)
1580
1590
(1592)
1600
1610
(1612)
1620
1630
(1632)
1640
1650
(1652)
1660
1670
(1672)
1680

Survey @ 1553.8m: 0.62° 337.4A

CALCARENITE:olv gry,vf,sbang
-sbrnd,tr carb spks,mod hd,v pr
vis por,no fluor.

Survey @ 1582.7m: 0.61° 355.8A

MARL:lt olv gry,arg,5-10%
CALCARENITE,tr carb spks,tr
ool,sft-tr mod hd,blky-sbbiky.

Survey @ 1611.6m: 0.79° 336.9A

MARL:lt olv gry,arg,5-10%
CALCARENITE,tr LESTONE,
tr carb spks,tr ool,sft-tr mod
hd,blky-sbbiky.

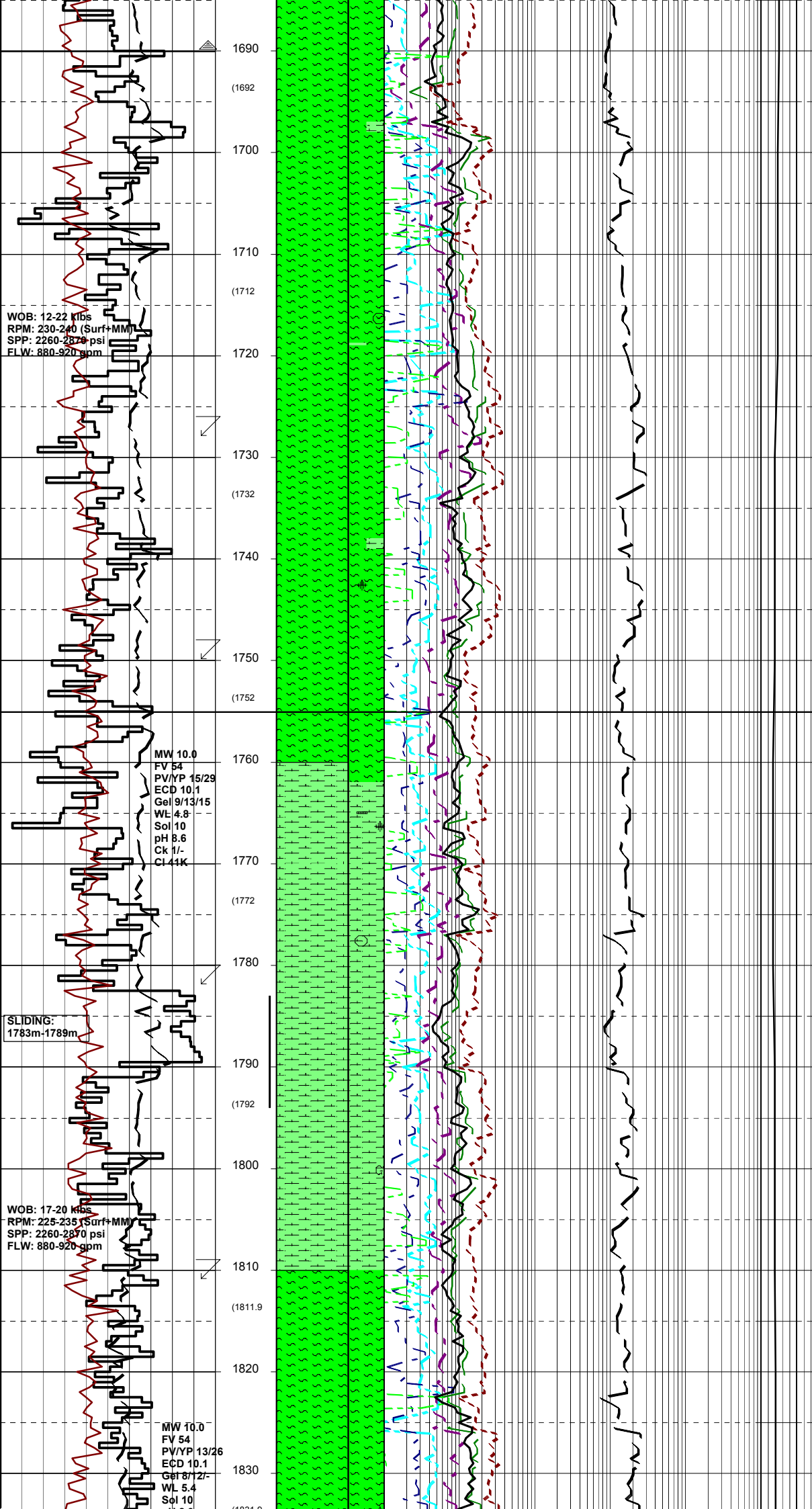
Survey @ 1640.3m: 0.88° 343.3A

MARL:olv gry,arg,tr LESTONE
5-10% CALCARENITE,tr carb
spks & lams,tr ool,sft-mnr frm,
blky-sbbiky.

WOB: 15-31 klbs
RPM: 240 (Surf+MM)
SPP: 2550-2825 psi
FLW: 915 gpm

MW 9.3
EV 50
PV/YP 11/20
ECD 9.4
Gel 6/8/9
WL 6.8
Sol 8
pH 8.5
Ck 1/-
CI 42K

WIPER TRIP TO PICK UP MORE DRILL PIPE



1690
(1692)
1700
1710
(1712)
1720
1730
(1732)
1740
1750
(1752)
1760
1770
(1772)
1780
1790
(1792)
1800
1810
(1811.9)
1820
1830

WOB: 12-22 klbs
RPM: 230-240 (Surf+MM)
SPP: 2260-2870 psi
FLW: 880-920 gpm

MW 10.0
FV 54
PV/YP 15/29
ECD 10.1
Gel 9/13/15
WL 4.8
Sol 10
pH 8.6
Ck 1/-
Cl 41K

SLIDING:
1783m-1789m

WOB: 17-20 klbs
RPM: 225-235 (Surf+MM)
SPP: 2260-2870 psi
FLW: 880-920 gpm

MW 10.0
FV 54
PV/YP 13/26
ECD 10.1
Gel 8/12/-
WL 5.4
Sol 10

MARL:lt olv gry-lt gry.lt brn gry, arg,5-10% CALCARENITE,tr-occ carb spks,rr carb flks,rr pyr foss,tr ool,rr glauc,sft frm, blkly-sbbkly.

Survey @ 1727.4m: 1.05° 341.5A

MARL:lt olv gry-lt gry.lt brn gry, arg,5-10% CALCARENITE,tr wh LMST,carb spks,tr carb flks,tr glauc,rr echino,rr ool,sft frm, blkly-sbbkly.

Survey @ 1753.8m: 1.25° 345.4A

MARL:lt olv gry-lt gry.lt brn gry, arg,occ vf aren grd i/p to CALCARENITE,tr wh LMST,carb spks & flks,tr glauc,tr ool,rr pyr nods,sft frm,blkly-sbbkly.

LAKES ENTRANCE FORMATION
1755m MD (1755m TVD)

MARL:lt olv gry-lt gry,arg,grad to calc CLYST,vf aren i/p,rr pyr & calc COAL frag,tr carb spks,rr glauc,tr ool,rr pyr nods,v sft-sft,occ frm,blkly-sbbkly.

CALCAREOUS CLAYSTONE:
lt olv gry-lt gry,grd to MARL, stly,mnr vf aren,tr carb spks, tr ool,rr pyr nods,rr glauc spks, v sft-sft,occ frm,blkly-sbbkly.

Survey @ 1782.1m: 1.31° 348.9A

CALCAREOUS CLAYSTONE:
med lt gry-lt olv gry,slty,mnr vf aren,rr carb spks,rr ool,v sft-sft,occ frm,blkly-sbbkly.

Survey @ 1810.7m: 1.32° 342.1A

MARL:med lt gry-lt olv gry,slty, mnr vf aren,rr carb spks,rr ool, rr pyr lam,v sft-sft,occ frm, blkly-sbbkly.

pH 8.9
Gk-1/-
Cl 43K

Survey @ 1839.5m: 1.17° 347.3A

MARL: med lt gry-lt olv gry, slty, mnr vf aren, tr wh LMST frags, rr carb spks, rr carb spks, rr ool, rr pyr nods, v sft-sft, occ frm, blk-ylky-sbbly.

Survey @ 1868.4m: 1.33° 345.6A

CALCAREOUS CLAYSTONE: med gry, arg, slty i/p, tr vf aren, tr calcite, tr disse pyr, rr carb spks & lams, rr ool, sft-frm, blk-ylky-sbbly.

Survey @ 1897.6m: 1.53° 346.9A

CALCAREOUS CLAYSTONE: med gry, arg, slty i/p, tr vf aren, tr calcite, tr disse pyr, rr carb spks & lams, rr ool, tr foss, sft-frm, blk-ylky-sbbly.

Survey @ 1926.7m: 1.66° 346.3A

CLAYSTONE: lt med gry-med gry, arg, 15-20% calc, tr vf aren, tr calcite, tr disse pyr, rr ool, tr foss, sft-frm, sbbly-blky.

Survey @ 1955.7m: 1.49° 331.5A

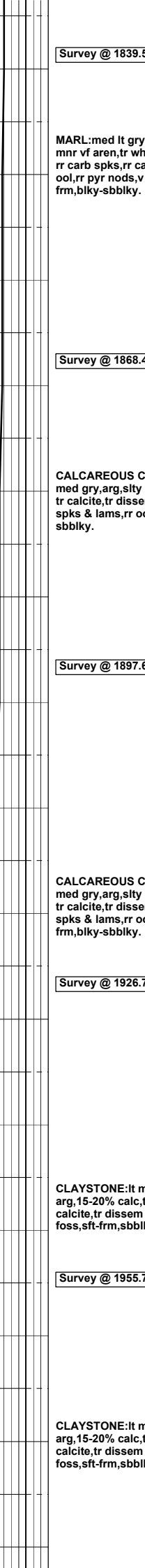
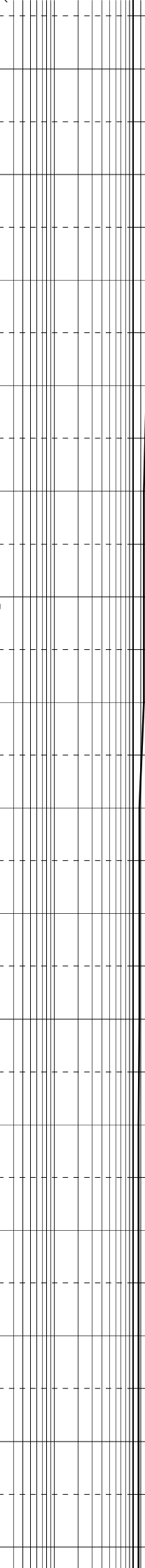
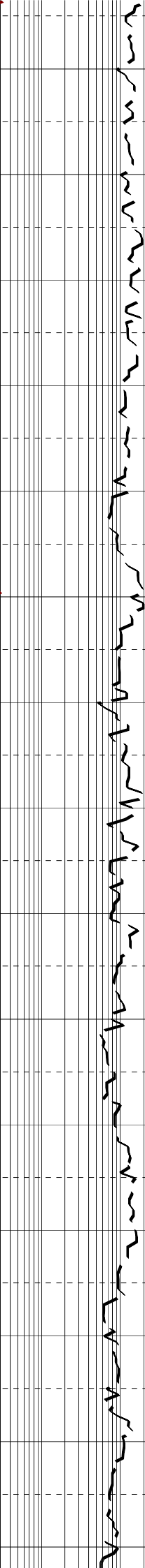
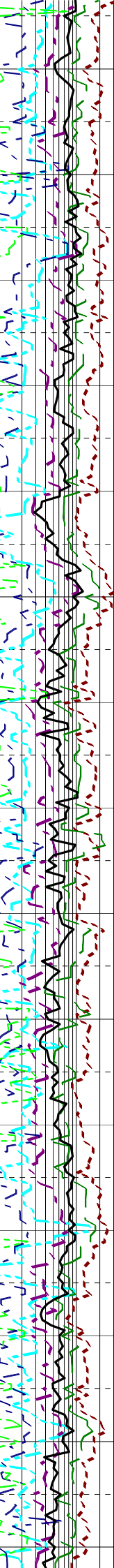
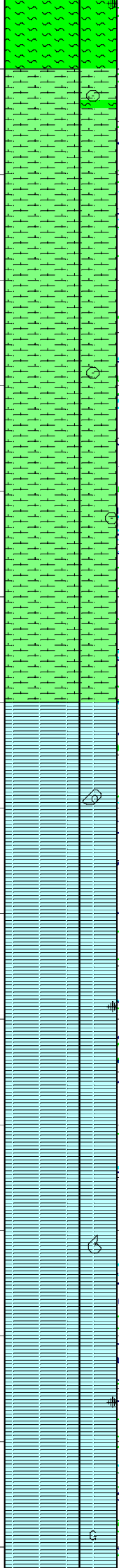
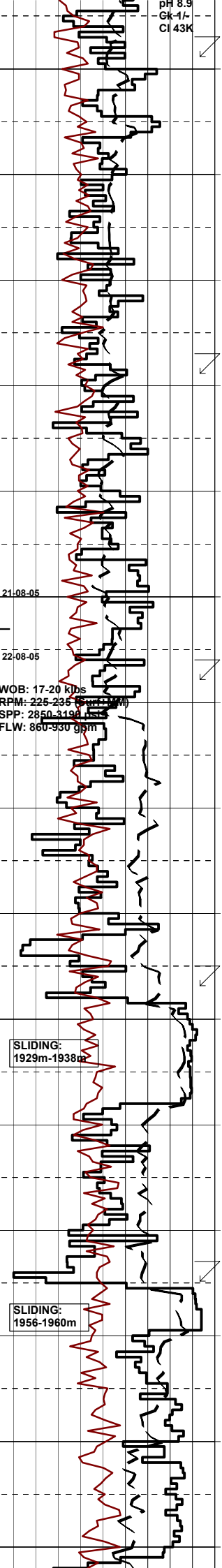
CLAYSTONE: lt med gry-med gry, arg, 15-20% calc, tr vf aren, tr calcite, tr disse pyr, rr ool, tr foss, sft-frm, sbbly-blky.

1840
1850
(1851.9)
1860
1870
(1871.9)
1880
1890
(1891.9)
1900
1910
(1911.9)
1920
1930
(1931.9)
1940
1950
(1952.4)
1960
1970
(1971.9)
1980

21-08-05
22-08-05
WOB: 17-20 kDds
RPM: 225-235
SPP: 2850-3190
FLW: 860-930 gsm

SLIDING:
1929m-1938m

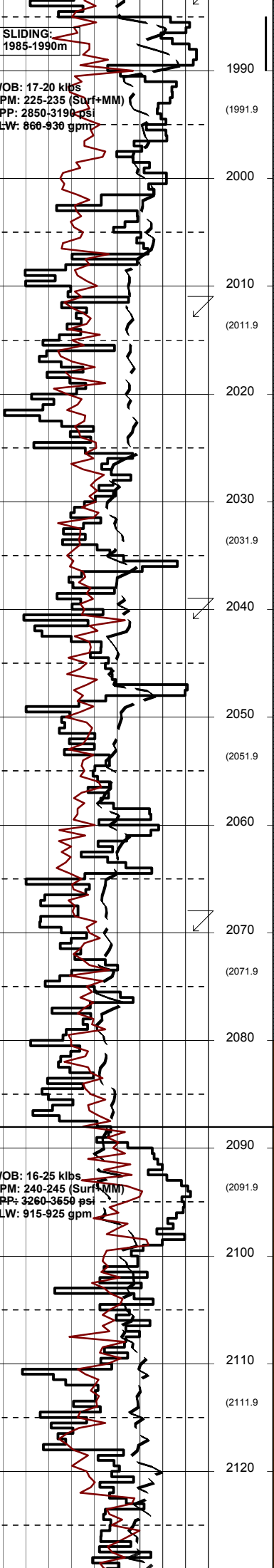
SLIDING:
1956-1960m



SLIDING:
1985-1990m

WOB: 17-20 klbs
RPM: 225-235 (Surf+MM)
SPP: 2850-3190 psi
FLW: 860-930 gpm

WOB: 16-25 klbs
RPM: 240-245 (Surf+MM)
SPP: 3260-3650 psi
FLW: 915-925 gpm



1990
(1991.9)
2000
2010
(2011.9)
2020
2030
(2031.9)
2040
2050
(2051.9)
2060
2070
(2071.9)
2080
2090
(2091.9)
2100
2110
(2111.9)
2120
2130

Survey @ 1984.1m: 1.39° 329.8A

Survey @ 2012.6m: 1.45° 328.8A

Survey @ 2040.9m: 1.49° 334.3A

Survey @ 2069.4m: 1.39° 333.9A

LATROBE FORMATION
2088.5m MD (2088.5m TVD)

CLAYSTONE:dk med gry-olv gry arg,14% calc,tr calcite,rr ool, tr disse pyr,tr glauc,tr lams, sft-frm,sbbiky-blky.

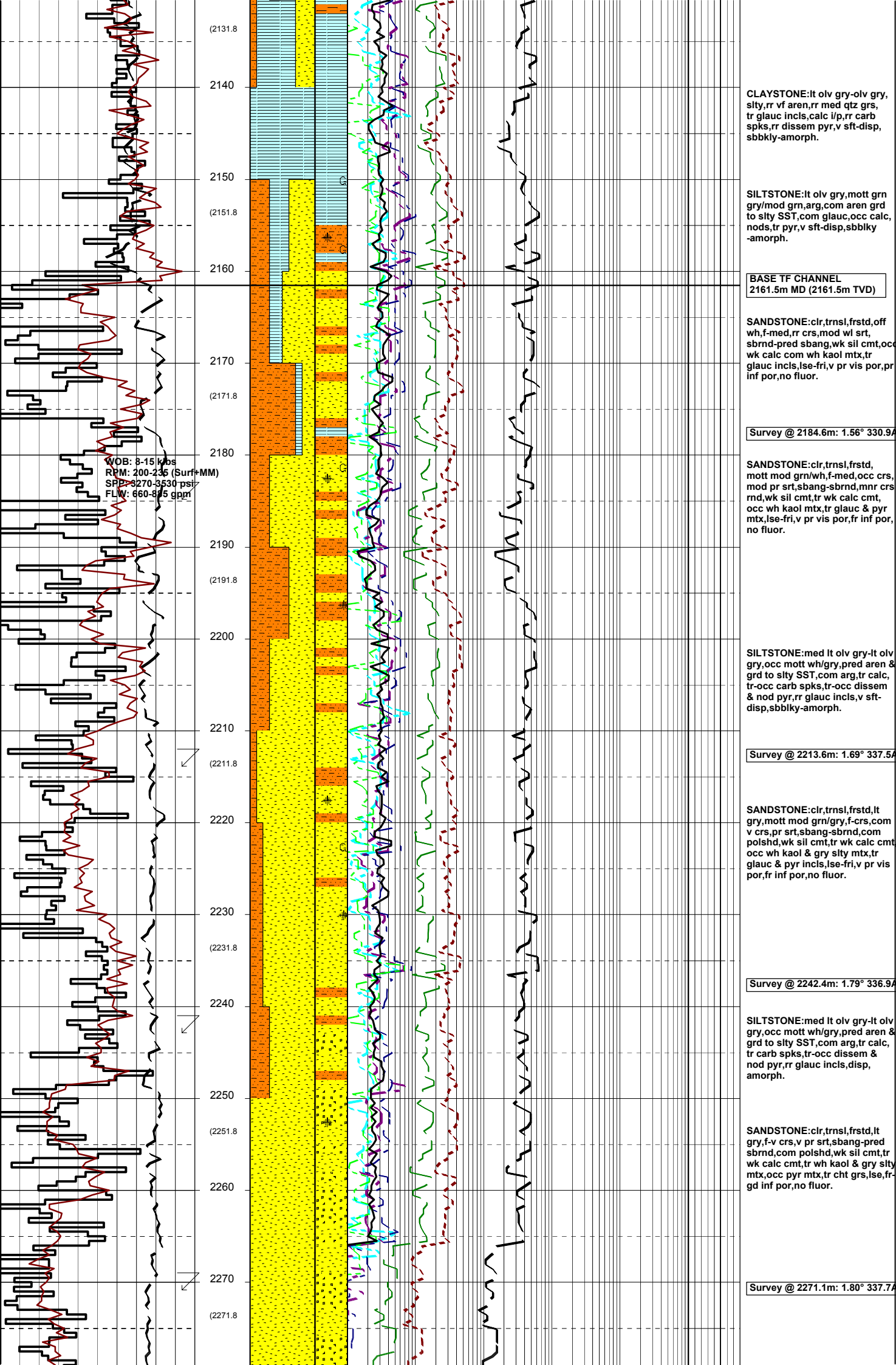
CLAYSTONE:dk med gry-olv gry arg,17% calc,tr calcite,rr ool, tr disse pyr,tr foss,tr lams, sft-frm,sbbiky-blky.

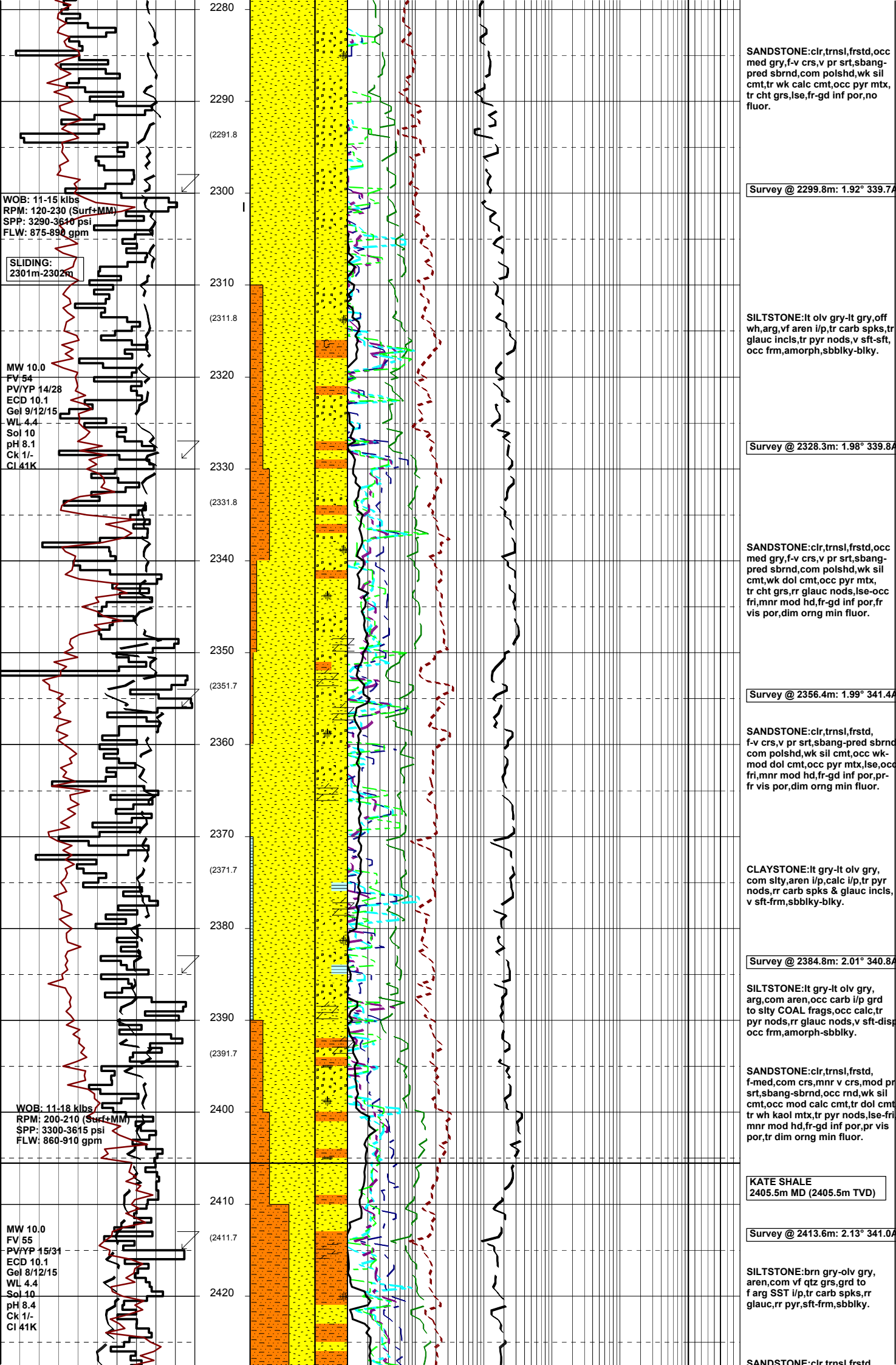
CLAYSTONE:lt med gry-lt olv gry,arg,20% calc,tr calcite,rr glauc,disse pyr,tr vf qtz grns, tr lams,v sft-sft,sbbiky-blky.

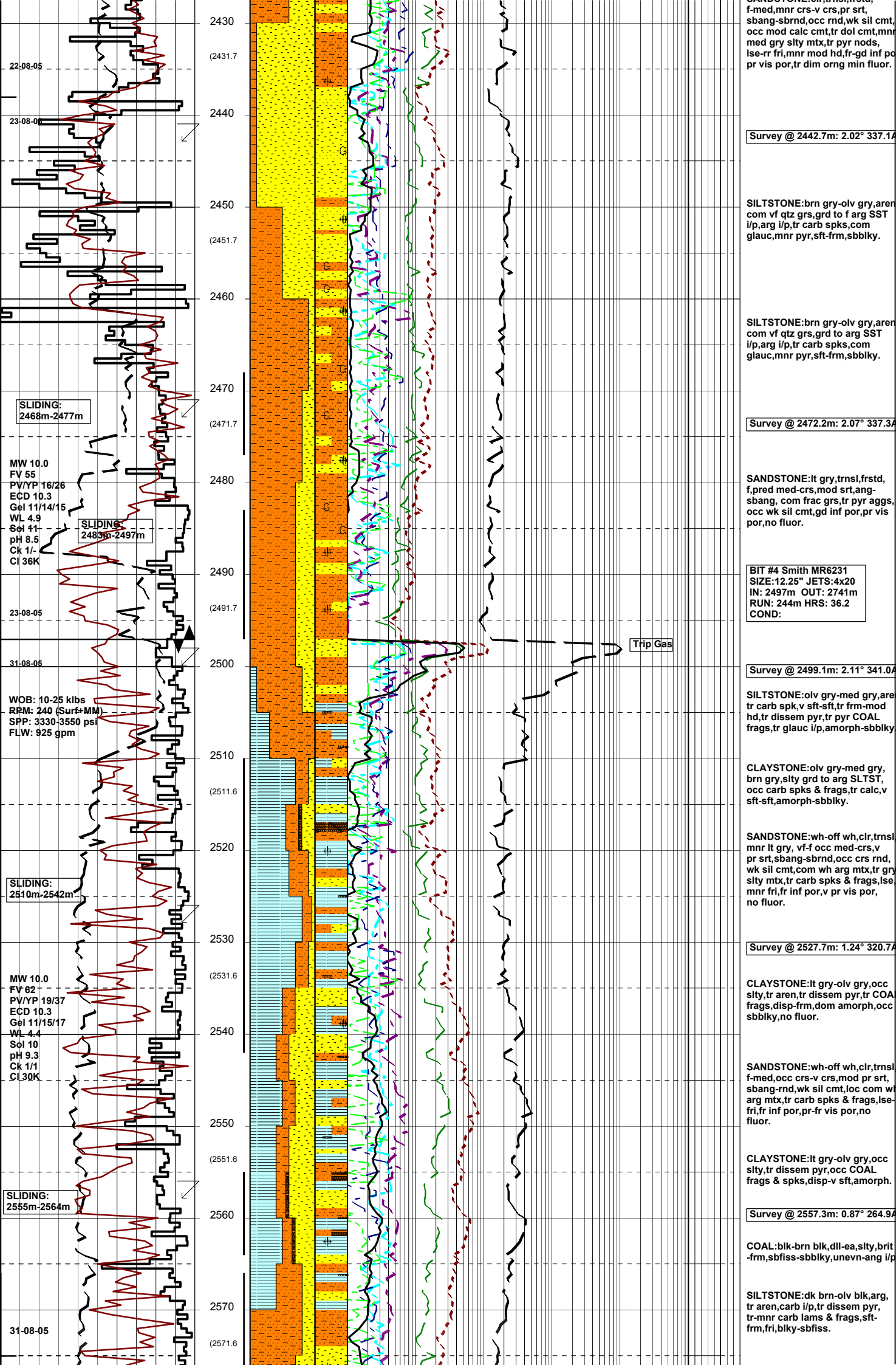
SANDSTONE:clr,dom trnsI,dom med,mnr crs-v crs,mod srt, sbang-sbrnd,tr Fe stn,com glauc, cIn & lse,fr por,no fluor.

SILTSTONE:lt brn,pl rd prpl,lt gr aren,kaol i/p,Fe stn i/p,com glauc & qtz grs,frm-mod hd i/p,blky.

SANDSTONE:clr,dom trnsI,frstd dom vf-f,mnr med-v crs,mod srt, sbang-sbrnd,sfty mtx,tr wk calc cmt,com glauc,dom lse,ti por,nd fluor.







f-med,mnr crs-v crs,pr srt,
 sbang-sbrnd,occ rnd,wk sil cmt,
 occ mod calc cmt,tr dol cmt,mn
 med gry slty mtx,tr pyr nod,
 lse-rr fri,mnr mod hd,fr-gd inf po
 pr vis por,tr dim org min fluor.

Survey @ 2442.7m: 2.02° 337.1A

SILTSTONE:brn gry-olv gry,aren
 com vf qtz grs,grd to f arg SST
 i/p,arg i/p,tr carb spks,com
 glauc,mnr pyr,sft-frm,sbbiky.

SILTSTONE:brn gry-olv gry,aren
 com vf qtz grs,grd to arg SST
 i/p,arg i/p,tr carb spks,com
 glauc,mnr pyr,sft-frm,sbbiky.

Survey @ 2472.2m: 2.07° 337.3A

SANDSTONE:lt gry,trnsf,frstd,
 f,pred med-crs,mod srt,ang-
 sbang, com frac grs,tr pyr aggs,
 occ wk sil cmt,gd inf por,pr vis
 por,no fluor.

BIT #4 Smith MR6231
 SIZE:12.25" JETS:4x20
 IN: 2497m OUT: 2741m
 RUN: 244m HRS: 36.2
 COND:

Survey @ 2499.1m: 2.11° 341.0A

SILTSTONE:olv gry-med gry,are
 tr carb spk,v sft-sft,tr frm-mod
 hd,tr disse pyr,tr pyr COAL
 frags,tr glauc i/p,amorph-sbbiky

CLAYSTONE:olv gry-med gry,
 brn gry,slty grd to arg SLTST,
 occ carb spks & frags,tr calc,v
 sft-sft,amorph-sbbiky.

SANDSTONE:wh-off wh,clr,trnsf
 mnr lt gry, vf-f occ med-crs,v
 pr srt,sbang-sbrnd,occ crs rnd,
 wk sil cmt,com wh arg mtx,tr gry
 slty mtx,tr carb spks & frags,lse
 mnr fri,fr inf por,v pr vis por,
 no fluor.

Survey @ 2527.7m: 1.24° 320.7A

CLAYSTONE:lt gry-olv gry,occ
 slty,tr aren, tr disse pyr,occ COA
 frags,disp-frm,dom amorph,occ
 sbbiky,no fluor.

SANDSTONE:wh-off wh,clr,trnsf
 f-med,occ crs-v crs,mod pr srt,
 sbang-rnd,wk sil cmt,loc com w
 arg mtx,tr carb spks & frags,lse-
 fri,fr inf por,pr-fr vis por,no
 fluor.

CLAYSTONE:lt gry-olv gry,occ
 slty,tr disse pyr,occ COAL
 frags & spks,disp-v sft,amorph.

Survey @ 2557.3m: 0.87° 264.9A

COAL:blk-brn blk,dll-ea,slty,brit
 -frm,sbfiss-sbbiky,unevn-ang i/p

SILTSTONE:dk brn-olv blk,arg,
 tr aren,carb i/p,tr disse pyr,
 tr-mnr carb lams & frags,sft-
 frm,fri,blky-sbfiss.

SLIDING:
 2468m-2477m

MW 10.0
 FV 55
 PV/YP 16/26
 ECD 10.3
 Gel 11/14/15
 WL 4.9
 Sol 11
 pH 8.5
 Ck 1/-
 Cl 36K

SLIDING:
 2483m-2497m

WOB: 10-25 klbs
 RPM: 240 (Surf-MM)
 SPP: 3330-3550 psi
 FLW: 925 gpm

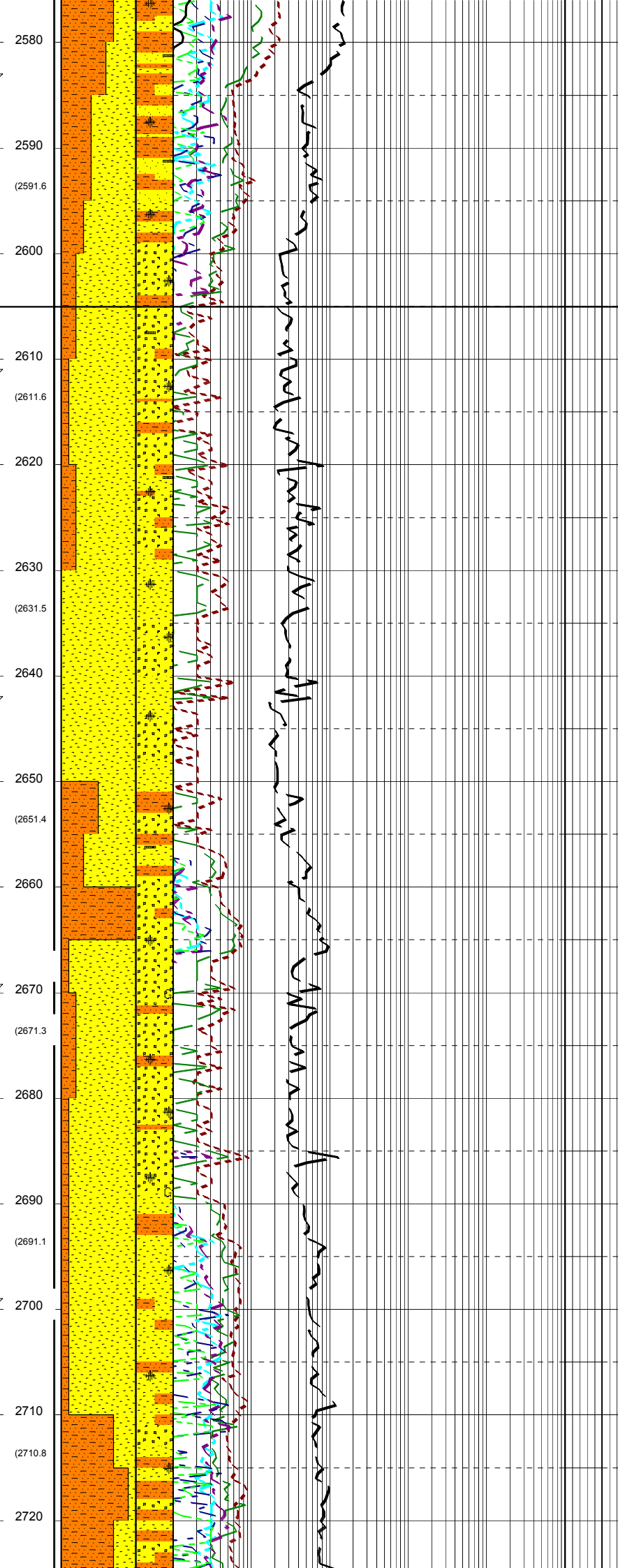
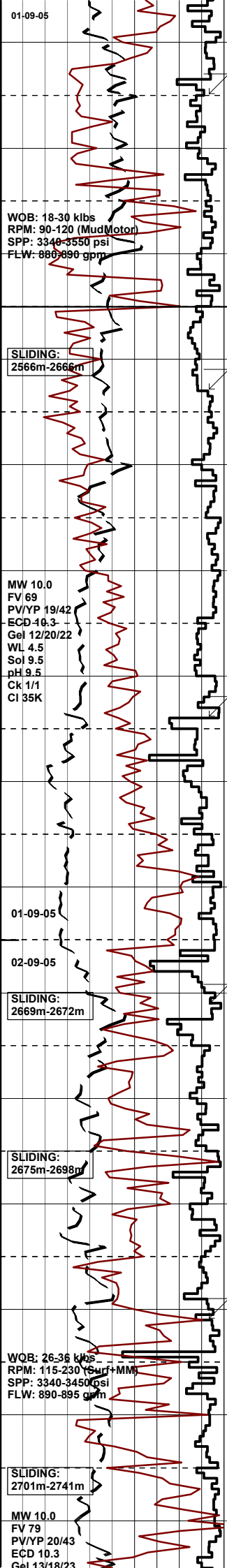
SLIDING:
 2510m-2542m

MW 10.0
 FV 62
 PV/YP 19/37
 ECD 10.3
 Gel 11/15/17
 WL 4.4
 Sol 10
 pH 9.3
 Ck 1/1
 Cl 30K

SLIDING:
 2555m-2564m

31-08-05

Trip Gas



01-09-05

2580

2590

(2591.6)

2600

WOB: 18-30 klbs
RPM: 90-120 (MudMotor)
SPP: 3340-3550 psi
FLW: 880-890 gpm

SLIDING:
2566m-2666m

2610

(2611.6)

2620

Survey @ 2585.2m: 1.48° 194.3A

SILTSTONE:brn gry-brn blk, arg, tr aren, carb i/p, com carb lams, mnr pyr, sft-frm, sbbly-sbfiss i/p.

SANDSTONE:clr-trnsl, frstd, v lt gry, vf-f, com v crs grs, sbang-sbrnd, mod strg, tr wk dol cmt, off wh kaol mtz, mnr carb lams, mnr pyr, ti vis por, fr inf por, tr dol fluor.

K2 SANDSTONE
2605m MD (2404.5m TVD)

SANDSTONE:clr, frstd i/p, wh i/p, crs-v crs, mnr med, tr f, ang-sbrnd, tr strg dol cmt, mnr wh kaol mtz, tr pyr, gen lse, mnr fri aggs, ti vis por, gd inf por, tr dol fluor.

Survey @ 2612.5m: 3.62° 191.4A

SILTSTONE:lt gry-brn gry, com aren, tr arg, tr calc, carb i/p, com carb lams, occ nod pyr, disp-sft, sbbly-amorph.

SANDSTONE:clr-opq, mnr lt gry, med-v crs, mod pr srt, ang-sbrnd, wk dol cmt i/p, mnr lt gry stly mtz, occ pyr nod, lse, mnr fri, pr inf por, v pr vis por, occ dol fluor.

Survey @ 2643.41m: 6.45° 190.1

SANDSTONE:clr, trnsl, occ lt gry, vf-crs, occ v crs, pr srt, ang-sbrnd, wk dol cmt i/p, mnr lt gry stly mtz, occ pyr nod, tr qtz ovghs, lse, mnr fri, v pr inf & vis por, occ dol fluor.

SILTSTONE:lt-med gry, com vf aren, occ carb spks & lams, occ dissem pyr, v sft-sft, amorph-occ sbbly.

01-09-05

02-09-05

2650

(2651.4)

2660

SLIDING:
2669m-2672m

2670

(2671.3)

2680

SLIDING:
2675m-2698m

2690

(2691.1)

2700

WQB: 26-36 klbs
RPM: 115-230 (Surf+MM)
SPP: 3340-3450 psi
FLW: 890-895 gpm

SLIDING:
2701m-2741m

2710

(2710.8)

2720

Survey @ 2671.36m: 7.27° 185.3

SILTSTONE:brn blk, dk gry, arg, carb i/p, com nod & dissem pyr, com carb lams & flks, sft-frm, sbbly-amorph.

SANDSTONE:clr, trnsl, frstd, occ lt gry, crs-v crs, tr vf-f aggs, pr srt, ang-sbrnd, mnr sil cmt, tr gry stly-off wh kaol mtz, tr-mnr nod & dissem pyr, tr glauc, gen lse, tr fri aggs, ti vis & gd inf por, tr dol fluor.

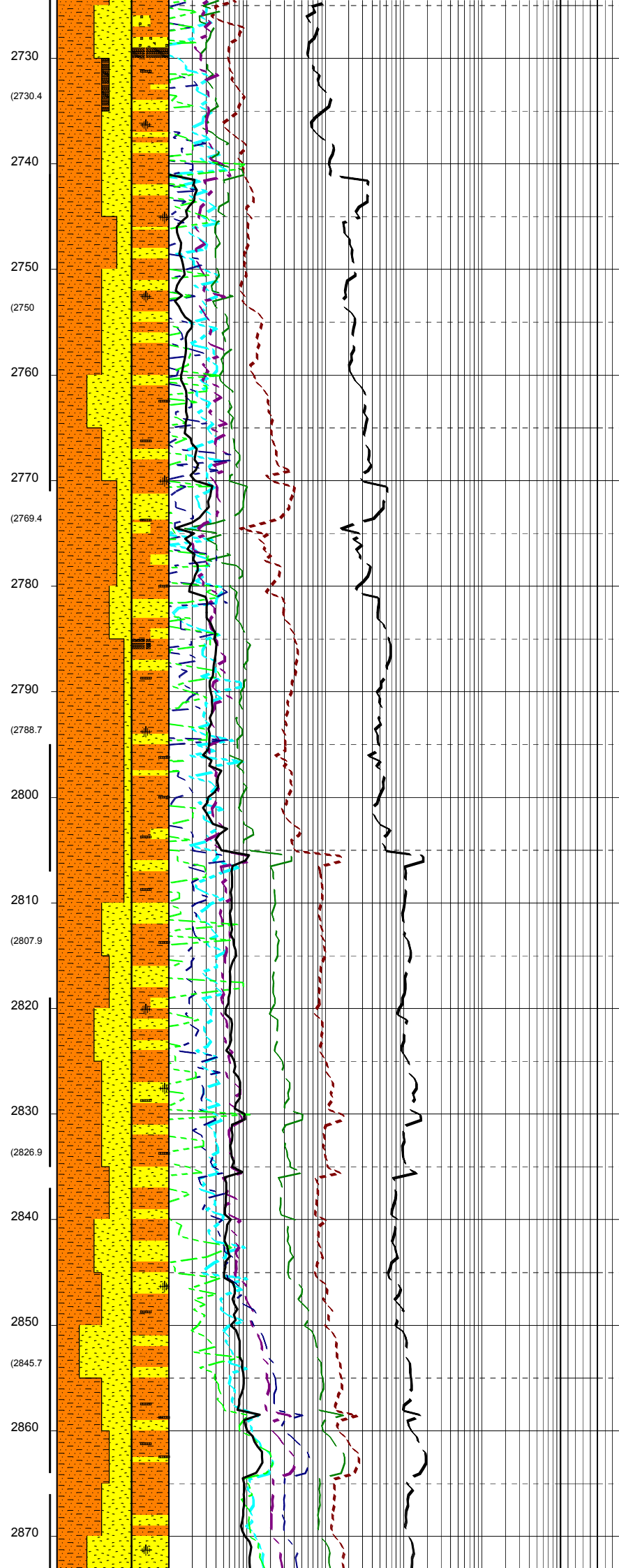
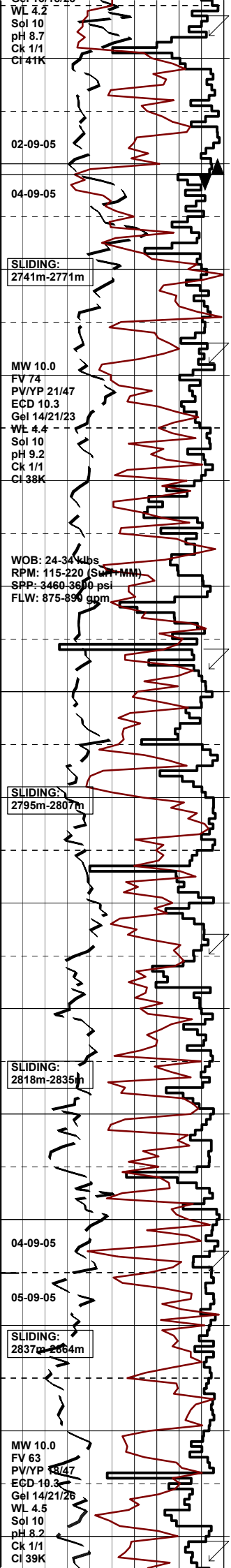
Survey @ 2700.5m: 9.30° 184.7

SANDSTONE:clr, trnsl, opq, frstd, off wh, lt gry, f-v crs, v pr srt, md-sbang, com frac grs, wk sil cmt, tr wk dol cmt, loc occ wh arg mtz, tr gry stly mtz, tr pyr mtz, mnr fri, fr-gd inf por, pr vis por, tr dol fluor.

SILTSTONE:lt gry-lt olv gry, tr vf aren i/p, carb lam i/p, tr carb, tr pyr nod, v sft-sft, amorph-sbfiss.

SANDSTONE:clr-opq, mnr lt gry, f-crs, com v crs, v pr srt, ang-sbrnd, wk sil cmt, tr loc stly mtz, lse, tr fri, pr inf por, v pr vis por, no fluor.

COAL:blk, dll-ea, sbvit i/p, pred



brit, frm i/p, sbbkly-blky, unevn-ang.

Survey @ 2728.7m: 10.88° 181.9

SANDSTONE: clr-opq, tr wh, dom crs, com f-med, v pr srt, ang-sbrnd, wk sil cmt, tr wh arg mtx, tr pyr nod, lse, tr fri, pr inf por, v pr vis por, no fluor.

Rmf @ 2741m: 0.11 ohm @ 75° F

BIT #5 HUGHES MXCOPH
SIZE: 12.25" JETS: 3x20, 1x18
IN: 2741m OUT: 2956m
RUN: 215m HRS: 24.83
COND: 3-4-W-T-A-E-Y1-BT-TD

SILTSTONE: lt-med gry, olv gry, lt brn gry, mnr gry blk, vf aren, com arg, mnr carb, tr calc, occ-loc com carb spks, tr-occ pyr nods, v sft-frm, amorph-sbfiss.

Survey @ 2757.9m: 13.90° 178.3

SANDSTONE: dom clr, com opq, tr lt gry, f-crs, occ v crs, pr srt, ang-sbrnd, wk sil cmt, tr gry sity mtx, lse, tr fri, pr inf por, no fluor.

SILTSTONE: lt gry-med gry, olv gry, pred arg, aren i/p, tr carb grd to COAL frags, tr carb spks, tr pyr nods, v sft-sft, tr mod hd, amorph-sbfiss.

Survey @ 2786.4m: 15.37° 180.9

COAL (TR): blk-gry blk, dll-ea, tr sbvit, sity grad to carb frags, sft-brit, sbbkly-sbfiss, unevn-ang.

SANDSTONE: clr, trns, opq, tr lt gry, tr off wh, f-med, com crs-v crs, mod pr srt, ang-sbrnd, wk sil cmt, tr wh arg mtx, tr gry sity mtx, rr pyr mtx, tr carb incl, v pr vis por, pr inf por, no fluor.

SILTSTONE: lt gry-med gry, brn gry, tr olv gry, pred arg, tr aren, tr COAL frags, tr carb spks, tr pyr nod, v sft-sft, tr mod hd, amorph-sbfiss.

Survey @ 2814.8m: 16.98° 182.0

SILTSTONE: lt brn gry-brn gry, lt-med gry, arg, mnr vf aren, tr-loc com carb spks & flks, occ carb grd to COAL frags, tr pyr nods, v sft-sft, amorph-sbfiss.

SANDSTONE: clr, trns, opq, tr lt gry, tr off wh, f-crs, occ v crs, mod pr srt, ang-sbrnd, wk sil cmt, tr wh arg mtx, tr gry sity mtx, rr pyr mtx, occ carb incl, v pr vis por, pr inf por, no fluor.

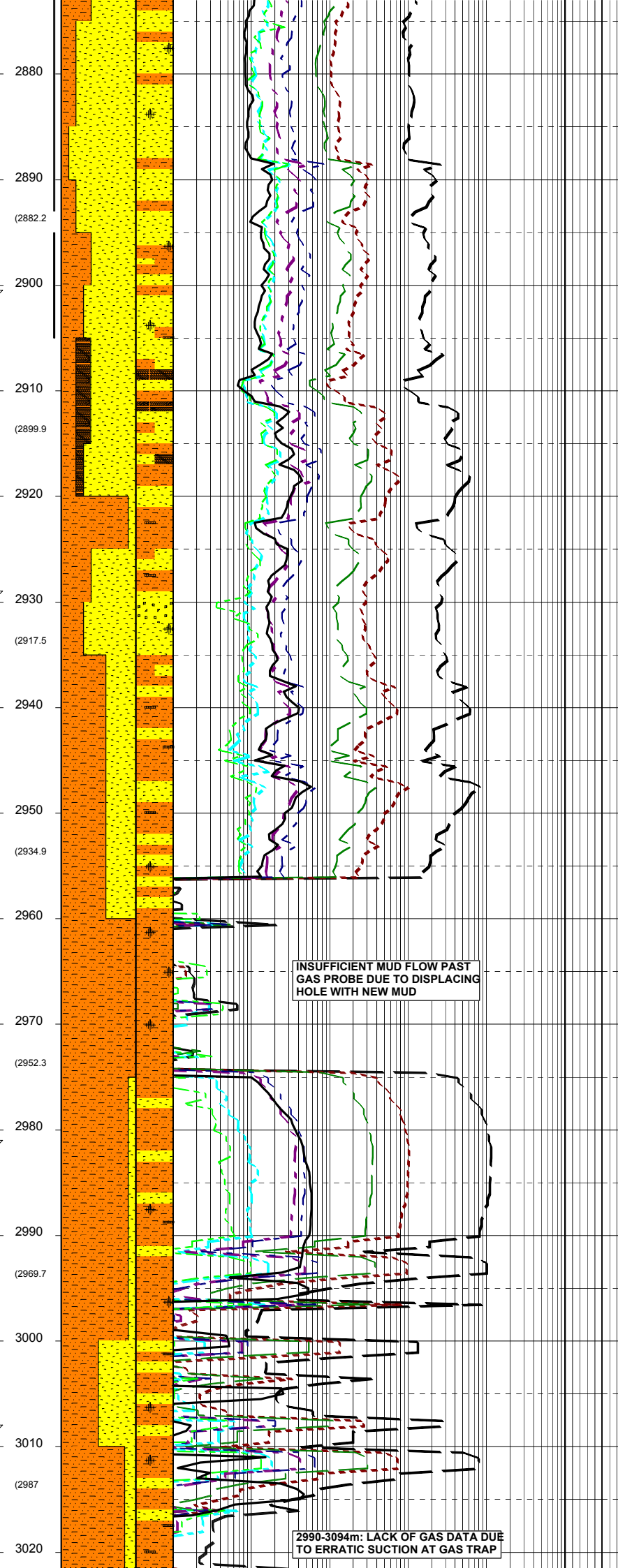
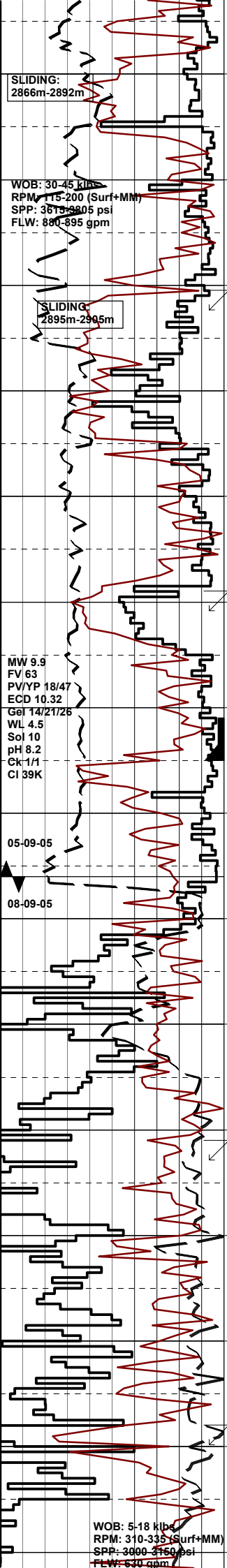
SILTSTONE: lt brn gry-brn gry, med lt gry, arg, tr aren, com carb spks & flks, tr carb COAL frags, v sft-sft, amorph-sbfiss.

Survey @ 2844.3m: 19.56° 181.7

SANDSTONE: offwh, trns, pl gry, vf-f, mod-v crs lse, pr srt, sbrnd, mod stng dol cmt, off wh arg-lt gry sity mtx, carb spks, mnr pyr, mod hd-fri aggs, gen lse, ti vis & fr inf por, no fluor.

SILTSTONE: brn blk-brn gry, arg, tr vf aren i/p, grd to vf SST i/p, carb i/p, com carb spks & lams, v sft-sft, mod hd vf SST i/p, amorph-sbfiss.

SANDSTONE: trns, off wh, v lt gry, vf-med, tr crs-v crs, mod srt, sbrnd, wh arg-lt gry sity mtx, gen lse, tr pyr cmt, mnr carb spks tr pyr, pr inf por, lse, no fluor.



Survey @ 2872.4m: 24.39° 182.4

SILTSTONE: brn blk-brn gry, lt br gry i/p, arg, tr vf aren i/p, grd to vf SST i/p, carb i/p, com carb spks & lams, v sft-sft, mod hd vf SST i/p, amorph-sbfiss.

SANDSTONE: clr-opq, lt gry-med gry, vf-med, tr srt, mod pr srt, pred sbrnd-com sbang, wk sil cmt, tr pyr cmt, tr gry slty mtx, wh arg m lse, rr fri, pr inf por, v pr vis por, no fluor.

SILTSTONE: lt brn gry-brn gry, lt gry, gry blk, arg, mnr vf aren & grd to vf slty SST i/p, carb i/p, occ-loc com carb spks & flks, v sft-sft, tr mod hd, amorph-sbfiss.

Survey @ 2901.5m: 28.38° 180.3

COAL: blk-brn blk, pred dll, com e brit, tr frm, blk-y-sbbiky, ang-unev

SANDSTONE: clr-opq, lt gry-gry vf-med, tr v crs, mod srt, pred sbrnd-com sbang, wk sil cmt, tr gry slty mtx, lse, tr fri, pr inf por, v pr vis por, no fluor.

SILTSTONE: lt brn gry-brn gry, lt gry, gry blk, arg, tr vf aren, carb i/p, grd to carb SLTST, occ-loc com carb spks & flks, v sft-sft, amorph-sbfiss.

Survey @ 2930.7m: 28.88° 180.3

SANDSTONE: clr-opq, mnr off wh f-v crs, pr srt, sbrnd-sbang, wk sil cmt, tr wh slty mtx, rr pyr mtx, lse, rr fri, pr inf por, v pr vis por, no fluor.

SILTSTONE: lt brn gry-brn gry, lt gry, arg, mnr aren, tr pyr nod, tr carb spks, v sft-disp, tr hd, amorph, tr sbbiky.

SANDSTONE: clr-opq, mnr off wh f-v crs, pr srt, sbrnd-sbang, wk sil cmt, tr wh slty mtx, lse, rr fri, pr inf por, v pr vis por, no fluor.

12.25" HOLE TD @ 2956m

9.625" CASING SET @ 2945m

Rmf @ 2956m: 0.12 ohm @ 75°F

LOT at 2959m: EMW=13.1ppg

BIT #6 SECURITY FM3743, SIZE: 8.5" JETS: 3x18 3x22 IN: 2956m OUT: 3310m RUN: 354m HRS: 14.2 COND: 1-4-WT-S-X-1/16-CT-WO

SILTSTONE: brn gry-lt gry, tr wh, occ arg slt, tr pyr nod, tr carb spk v sft-mod hd, tr disp, sbbiky-blky.

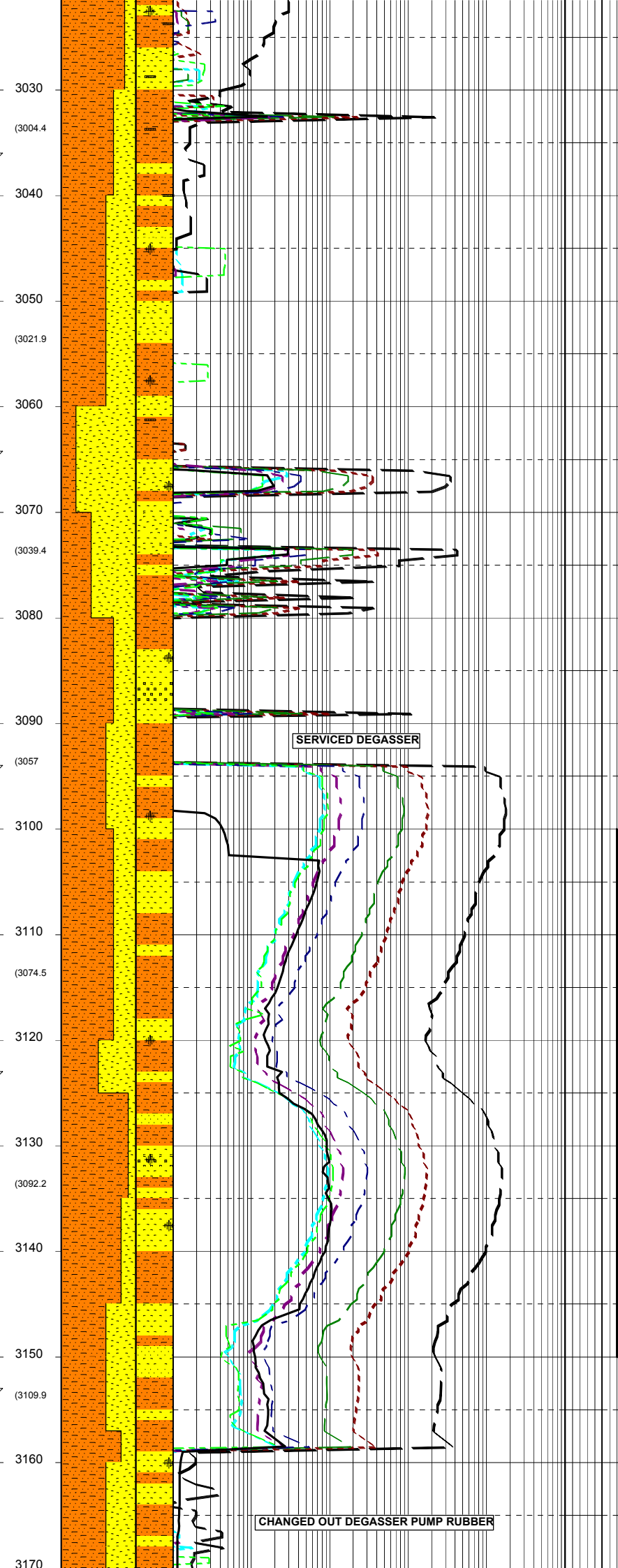
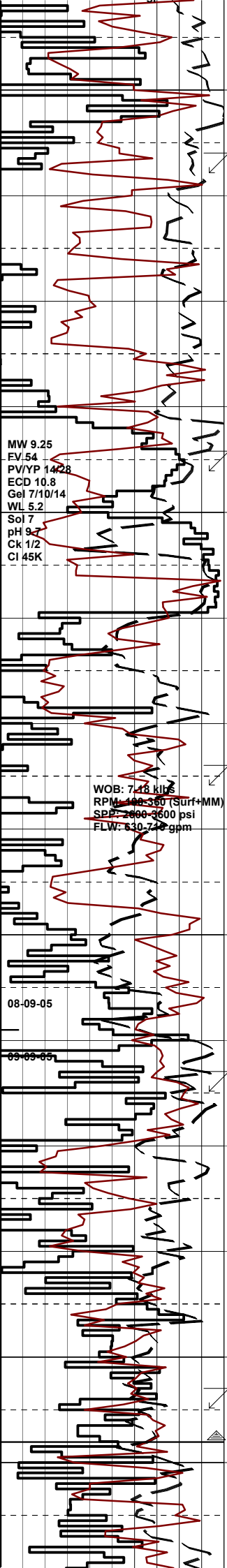
SANDSTONE: clr-opq, mnr off wh vf-f, mod srt, sbang-sbrnd, wk calc cmt, lse-fri, v pr inf por, mnr dll orng calc fluor.

Survey @ 2981.0m: 30.08° 180.8

SANDSTONE: clr-opq, mnr off wh vf-f, mod srt, sbang-sbrnd, wk calc cmt, lse-fri, v pr inf por, mnr dll orng calc fluor.

Survey @ 3009.9m: 29.88° 179.8

SANDSTONE: clr-opq, mnr off wh vf-f, mod srt, sbang-sbrnd, wk calc cmt, lse-fri, v pr inf por, mnr dll orng calc fluor.



SILTSTONE:brn gry-lt gry,occ arg slit,tr pry nod,tr carb spks,tr arg mtx,tr disp,frm-mod hd, blkly-sbbkly.

SURVEY @ 3038.5m: 29.08° 178.9

SANDSTONE:clr-opq,v f-v crs, pr srt,ang-sbrnd,lse,fr-gd inf por

SILTSTONE:brn gry-lt gry,occ arg slit,tr pry nod,tr carb spks,tr arg mtx,tr disp,frm-mod hd, blkly-sbbkly.

SANDSTONE:opq-clr,tr wh, v crs-f,pr srt,sbang-sbrnd,tr calc cmt,lse-fri,fr-gd inf por,mnr dll orng calc fluor.

SURVEY @ 3066.6m: 28.66° 178.4

SILTSTONE:brn gry-lt gry,occ arg slit,tr pry nod,tr carb spks,tr arg mtx,tr disp,frm-mod hd, blkly-sbbkly.

SANDSTONE:opq-clr,tr wh, v crs-f,pr srt,sbang-sbrnd,tr calc cmt,lse-fri,fr-gd inf por,mnr dll orng calc fluor.

SANDSTONE:clr-trnsl,vf-pred f,tr crs,mod srt,sbrnd-sbang,tr sil cmt,tr pry nod,fri-occ mod hd,occ lse,prvis por,pr-fr inf por, no fluor.

SURVEY @ 3095.3m: 28.69° 178.5

SANDSTONE:clr-trnsl,f-med,tr c pr-mod srt,sbrnd-sbang,tr sil cmt,tr-com wh-lt brn arg mtx,tr nod pyr,tr micmic,fri-occ mod hd,tr lse,v pr-pr vis por in f aggs, pr-fr inf por in loose component, tr fluor.

SILTSTONE:lt brn-brn,brn gry,lt gry i/p,aren,tr carb frags & lams, nod pyr,tr micmic,sft-frm,sbbkly sbfiss.

FLUOR:3100m-3150m;T Tr dll lt grn,no cut no c/c,no r/r.

SURVEY @ 3123m: 28.01° 177.2A

SANDSTONE:clr-trnsl,wh,opq,vf f (aggs),tr crs (lse),pr srt,sbrnd-sbang,tr sil cmt,lt gry/lt brn argmtx,tr nod pyr tr carb spl fri,pred lse,pr vis por in aggs, pr-fr inf porin lse component, tr fluor.

SILTSTONE:brn/dk brn,dk brn gry,aren grd vf SST i/p,grd to CARB SLTST i/p,tr carb lams & frags,sft-frm,sbfiss-sbbkly.

SURVEY @ 3153.2m: 27.87° 176.2

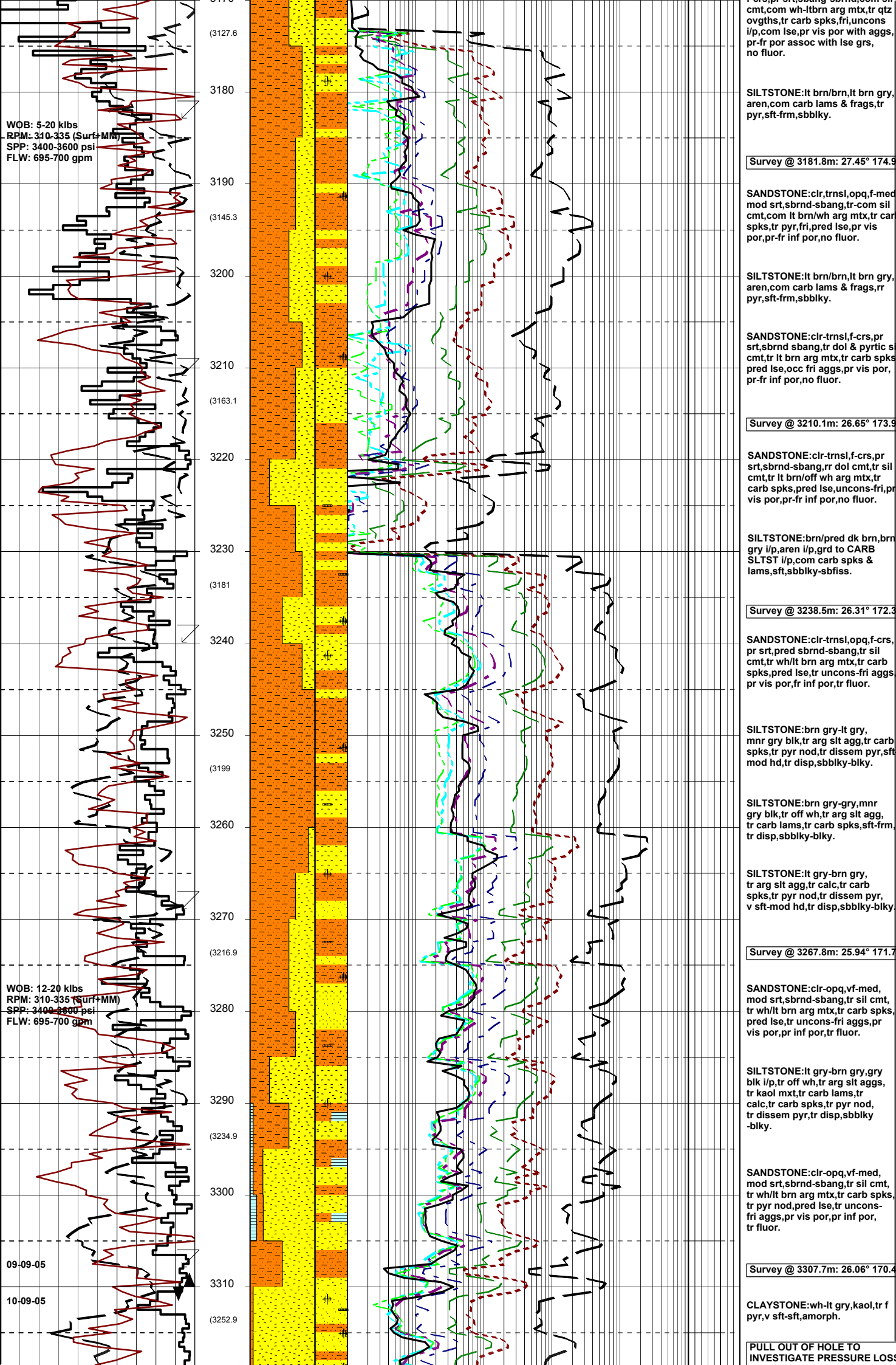
Back ream to casing shoe

SILTSTONE:lt brn/brn,brn gry,aren i/p,tr carb lams & frags, frm,occ mod hd,sbfiss-sbbkly.

SANDSTONE:clr-trnsl,off wh,opq f,crs,pr srt,sbang-sbrnd,com sil

SERVICED DEGASSER

CHANGED OUT DEGASSER PUMP RUBBER



WOB: 5-20 klbs
 RPM: 310-335 (Surf+MM)
 SPP: 3400-3600 psi
 FLW: 695-700 gpm

WOB: 12-20 klbs
 RPM: 310-335 (Surf+MM)
 SPP: 3400-3600 psi
 FLW: 695-700 gpm

09-09-05

10-09-05

SANDSTONE:lt arg,pr wh,pr arg mt,x,pr qtz
 ovghts,pr carb spks,fri,uncons
 i/p,com lse,pr vis por with aggs,
 pr-fr por assoc with lse grs,
 no fluor.

SILTSTONE:lt brn/brn,lt brn gry,
 aren,com carb lams & frags,tr
 pyr,sft frm,sbbkly.

Survey @ 3181.8m: 27.45° 174.9

SANDSTONE:clr,trns,opq,f-med
 mod srt,sbrnd-sbang,tr-com sil
 cmt,com lt brn/wh arg mt,x,tr carb
 spks,tr pyr,fri,pr lse,pr vis
 por,pr-fr inf por,no fluor.

SILTSTONE:lt brn/brn,lt brn gry,
 aren,com carb lams & frags,rr
 pyr,sft frm,sbbkly.

SANDSTONE:clr-trns,f-crs,pr
 srt,sbrnd sbang,tr dol & pyrtic s
 cmt,lt brn arg mt,x,tr carb spks
 pred lse,occ fri aggs,pr vis por,
 pr-fr inf por,no fluor.

Survey @ 3210.1m: 26.65° 173.9

SANDSTONE:clr-trns,f-crs,pr
 srt,sbrnd-sbang,rr dol cmt,lr sil
 cmt,lr lt brn/off wh arg mt,x,lr
 carb spks,pred lse,uncons-fri,pr
 vis por,pr-fr inf por,no fluor.

SILTSTONE:brn/pred dk brn,brn
 gry i/p,aren i/p,grd to CARB
 SLTST i/p,com carb spks &
 lams,sft,sbbkly-sbfiss.

Survey @ 3238.5m: 26.31° 172.3

SANDSTONE:clr-trns,opq,f-crs,
 pr srt,pred sbrnd-sbang,lr sil
 cmt,lr wh/lt brn arg mt,x,lr carb
 spks,pred lse,lr uncons-fri aggs
 pr vis por,fr inf por,lr fluor.

SILTSTONE:brn gry-lt gry,
 mnr gry blk,lr arg slt agg,lr carb
 spks,lr pyr nod,lr dissem pyr,sft
 mod hd,lr disp,sbbkly-blky.

SILTSTONE:brn gry-gry,mnr
 gry blk,lr off wh,lr arg slt agg,
 lr carb lams,lr carb spks,sft frm,
 lr disp,sbbkly-blky.

SILTSTONE:lt gry-brn gry,
 lr arg slt agg,lr calc,lr carb
 spks,lr pyr nod,lr dissem pyr,
 v sft-mod hd,lr disp,sbbkly-blky

Survey @ 3267.8m: 25.94° 171.7

SANDSTONE:clr-opq,vf-med,
 mod srt,sbrnd-sbang,lr sil cmt,
 lr wh/lt brn arg mt,x,lr carb spks,
 pred lse,lr uncons-fri aggs,pr
 vis por,pr inf por,lr fluor.

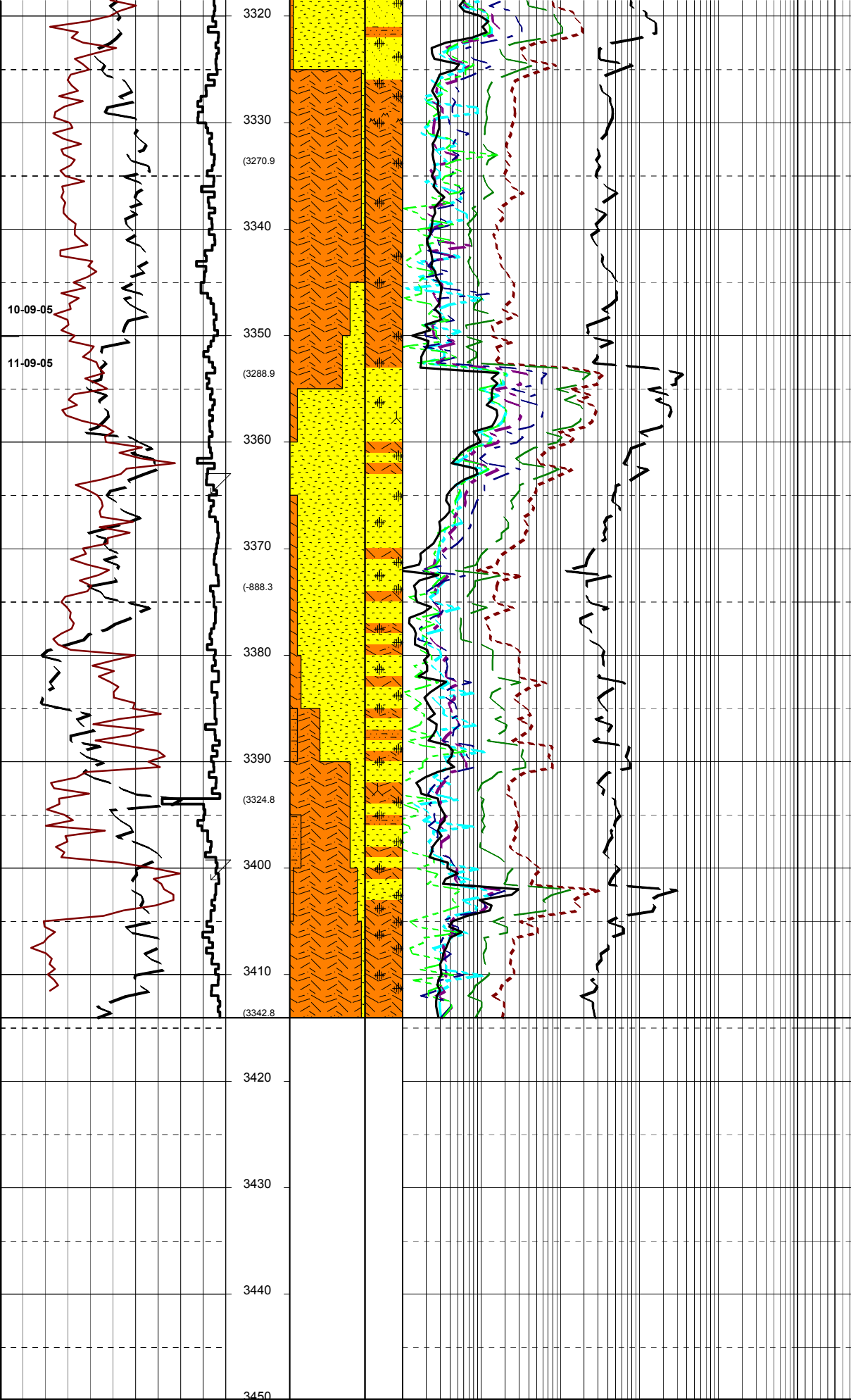
SILTSTONE:lt gry-brn gry,gry
 blk i/p,lr off wh,lr arg slt aggs,
 lr kaol mxt,lr carb lams,lr
 calc,lr carb spks,lr pyr nod,
 lr dissem pyr,lr disp,sbbkly
 -blky.

SANDSTONE:clr-opq,vf-med,
 mod srt,sbrnd-sbang,lr sil cmt,
 lr wh/lt brn arg mt,x,lr carb spks,
 lr pyr nod,pred lse,lr uncons-
 fri aggs,pr vis por,pr inf por,
 lr fluor.

Survey @ 3307.7m: 26.06° 170.4

CLAYSTONE:wh-lt gry,kaol,lr f
 pyr,v sft-sft,amorph.

PULL OUT OF HOLE TO
 INVESTIGATE PRESSURE LOSS



SANDSTONE:lt gry-opq,wh i/p vf-med,mod srt,sbrnd-sbang,tr arg mtx,tr calc,tr carb spks, tr pyr cmt,mnr pyr nod,tr disse pyr,pred lse,tr hd aggs,sft aggs i/p,pr vis por,ti inf por,mnr min fluor.

BIT #7 Hughes MX20D
 SIZE:8.5" JETS:3x14
 IN: 3310m OUT:3414 m
 RUN: 104m HRS:18.9
 COND:

VOLCANICS(weathered):lt gry-g gry,lt grnsh lt gry,alt to clay, v sft,amorph-mass.

VOLCANICS:grn blk,wh,occ pyroxene,com qtz,calc,v pyritic, frm-hd.

SANDSTONE:clr,trnsl,rr wh,dom lse,occ fri aggs,f-crs,dom med, md-ang,tr calc cmt,tr strg pyr cmt,mod wl srt,fr-gd por,tr min fluor.

Survey @ 3364.8m: 25.94° 170.2

SANDSTONE:clr-trnsl,wh i/p,f-cr pr-mod srt,sbrnd-sbang,ang i/p, tr sil cmt,10% arg mtx washing out i/p,abdt nod pyr,pred fri,rr lse,pr vis por,no fluor.

SANDSTONE:clr-trnsl,wh i/p,f-cr pr-mod srt,sbang,ang i/p,rr sil cmt,10% arg mtx washing out i/p,abdt nod pyr,pred fri,rr lse,pr vis por,no fluor,volc origin.

SILTSTONE:brn gry,arg,tr aren, carb spks & lams,v sft,sbbkly.

Survey @ 3401.2m: 25.96° 170.3

VOLCANICS:wh-grn blk,occ pyroxene,com qtz,calc,v pyritic, sft-hd,amorph-sbbkly.

SANDSTONE:clr-opq,vf-med, crs i/p,mod srt,sbrnd-sbang,lse pr vis por,pr inf por,rr min fluor.

Survey @ 3414m: 25.96° 170.31

BASKER 2 REACHED TD ON 11-SEPT-2005 @ 1400 HRS

DRILLERS DEPTH: 3414m
 LOGGERS DEPTH:

Logs Run:
 1)
 2)
 3)